

Driver LC 35W 800mA fixC SR SNC2

essence series

**Product description**

- _ Independent driver with strain-relief housing
- _ Max. output power 35 W
- _ Output current 800 mA
- _ For luminaires with M and MM as per EN 60598, VDE 0710 and VDE 0711
- _ Temperature protection as per EN 61347-2-13 C5e
- _ Nominal life-time up to 50,000 h
- _ 5-year guarantee

Properties

- _ Casing: polycarbonate, white
- _ Type of protection IP20
- _ Push-in terminals
- _ 2 separate strain relief parts for input and output cables with highly robust clamps

Functions

- _ Overload protection
- _ Short-circuit protection
- _ No-load protection
- _ No output current overshoot at mains on/off
- _ Burst protection voltage 1 kV
- _ Surge protection voltage 1 kV (L to N)
- _ Surge protection voltage 2 kV (L/N to earth)

Typical applications

- _ For spot light and downlight in retail and hospitality applications
- _ For panel light and area light in office and education application

Website

<http://www.tridonic.com/87500758>



Spotlights



Downlights



Linear



Area



Floor | Wall



Free-standing



Street



Decorative

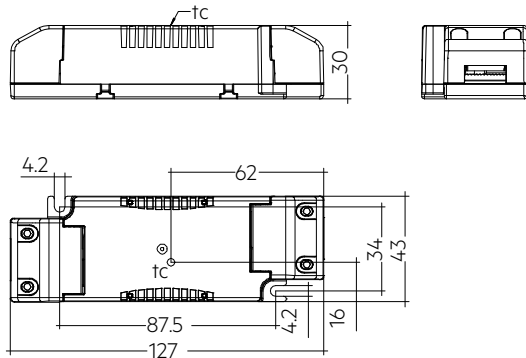


High bay

Driver LC 35W 800mA fixC SR SNC2

essence series

The complete data sheet for this product is available in the Downloads section.



Ordering data

| Type | Article number | Packaging, carton | Packaging, low volume | Packaging, high volume | Weight per pc. |
|---------------------------|----------------|-------------------|-----------------------|------------------------|----------------|
| LC 35/800/43 fixC SR SNC2 | 87500758 | 14 pc(s). | 364 pc(s). | 2,548 pc(s). | 0.111 kg |

Technical data

| | |
|--|------------------|
| Rated supply voltage | 220 – 240 V |
| AC voltage range | 198 – 264 V |
| Mains frequency | 50 / 60 Hz |
| Overvoltage protection | 320 V AC, 1 h |
| Leakage current (at 230 V, 50 Hz, full load) | < 450 μ A |
| THD (at 230 V, 50 Hz, full load) | \leq 20 % |
| THD (at 230 V, 50 Hz, min. load) | \leq 20 % |
| Output current tolerance ^① | \pm 7.5 % |
| Typical output LF current ripple at full load ^② | \pm 25 % |
| Starting time (at 230 V, 50 Hz, full load) | \leq 0.5 s |
| Turn off time (at 230 V, 50 Hz, full load) | \leq 0.5 s |
| Hold on time at power failure (output) | 0 s |
| Ambient temperature t_a | -20 ... +50 °C |
| Ambient temperature t_a (at life-time 50,000 h) | 40 °C |
| Storage temperature t_s | -40 ... +80 °C |
| Dimensions L x W x H | 127 x 43 x 30 mm |

Approval marks



Standards

EN55015, EN 60598-1, EN 61000-3-2, EN 61000-3-3, EN 61347-1, EN 61347-2-13, EN 61547, EN 62384

Specific technical data

| Type | Output current ^① | Input current (at 230 V, 50 Hz, full load) | Max. input power | Typ. power consumption (at 230 V, 50 Hz, full load) | Output power range | λ at full load | Efficiency at full load | λ at min. load | Efficiency at min. load ^③ | Min. forward voltage | Max. forward voltage | Max. output voltage (U-OUT) | Max. output peak current at full load ^④ | Max. output peak current at min. load ^④ | Max. casing temperature t_c |
|---------------------------|-----------------------------|--|------------------|---|--------------------|------------------------|-------------------------|------------------------|--------------------------------------|----------------------|----------------------|-----------------------------|--|--|-------------------------------|
| LC 35/800/43 fixC SR SNC2 | 800 mA | 0.175 A | 40 W | 39 W | 18.4 – 34.4 W | 0.95C | 90 % | 0.9C | 88 % | 23 V | 43 V | 60 V | 1,120 mA | 1,290 mA | 85 °C |

① Output current is mean value.

② Typical value at full load, depend on load's V-I character.

③ Test result at 230 V, 50 Hz.

④ The trend between min. and full load is linear and depend on load's V-I character.