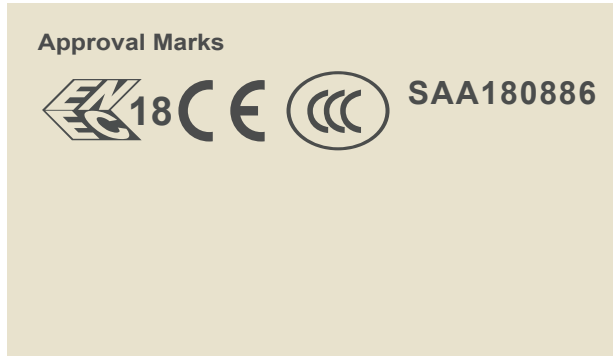
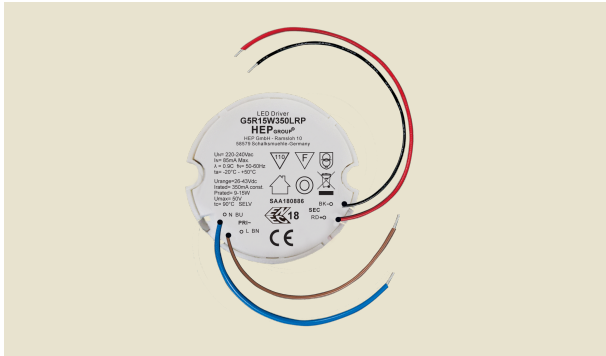


**Constant Current LED Driver**

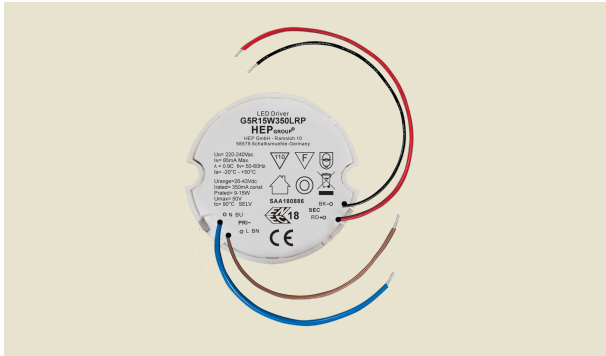


**Electronic**

Parameter	Conditions	Min	Nom	Max	Unit	
I/P Voltage Range		198	220-240	264	Vac	
Input Frequency		47	50-60	63	Hz	
Input Power	G5R15W300LRP	High Power LED	9.7	-	15	W
	G5R15W350LRP	High Power LED	11	-	18	W
	G5R15W500LRP	High Power LED	11	-	18	W
	G5R15W700LRP	High Power LED	11	-	18	W
Input Current	@230V	75	-	85	mA	
Output Voltage Range	G5R15W300LRP		26	-	43	Vdc
	G5R15W350LRP		26	-	43	Vdc
	G5R15W500LRP		18	-	30	Vdc
	G5R15W700LRP		13	-	21	Vdc
Output Current Range	G5R15W300LRP	@220V~240V	285	300	315	mA
	G5R15W350LRP	@220V~240V	333	350	368	mA
	G5R15W500LRP	@220V~240V	475	500	525	mA
	G5R15W700LRP	@220V~240V	665	700	735	mA
Rated Output power	G5R15W300LRP		7.5	-	13	W
	G5R15W350LRP		9	-	15	W
	G5R15W500LRP		9	-	15	W
	G5R15W700LRP		9	-	15	W
THD		-	-	15	%	
Efficiency	Full Load	-	85	-	%	
Standby Power	No load@230V	-	-	0.5	W	
Rise Time		-	-	500	ms	
Start-up Delay		-	-	500	ms	
Ripple current	peak to peak @ full load O/P voltage range	-	-	10	%	
Output Current Overshoot		-	-	10	%	
Power Factor	Full Load	0.90	-	-	-	
Protection	Over-voltage Protection		Auto recovery			
	Open-circuit Protection		Max output voltage at no load			
	Short-circuit Protection		Auto recovery			
RoHS Standard			Compliant			
Case Temp. (Tc)		-	-	90	°C	
External Operating Temperature		-20	-	+50	°C	
Operating humidity range		10	-	95	%	
Storage Temp. range		-40	-	+85	°C	
Lifetime	Full Load @ Ta = 50°C	-	50,000	-	hrs	
Case Dimensions	∅L x H	48	-	22	mm	

**220-240VAC**

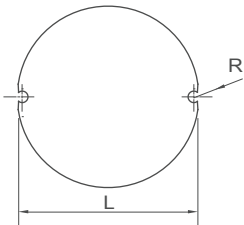
## Constant Current LED Driver



### Approval Marks



### Physical Parameter



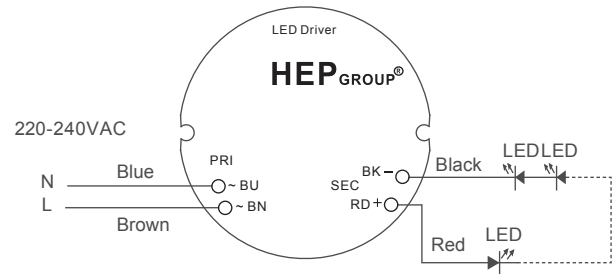
L : 48 mm    M: 46.7 mm  
 R : 1.6 mm    H : 22 mm

Tolerance :  $\geq 0 \sim 100 \geq \pm 0.5\text{mm}$   
 $100 \geq \pm 1\text{ mm}$

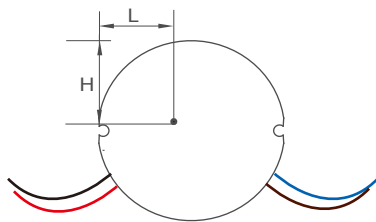
Terminal Block : Hard Wires : PRI : Blue / Brown 115mm AWG#20  
 SEC: Red / Black 140mm AWG#22

Housing Material : Polycarbonate / Potting  
 Soldering : Lead-Free, Comply With RoHS  
 Label : Surface Print

### Wiring Diagram



### TC point at bottom side of the case



L : 17.5 mm    H : 19.5 mm