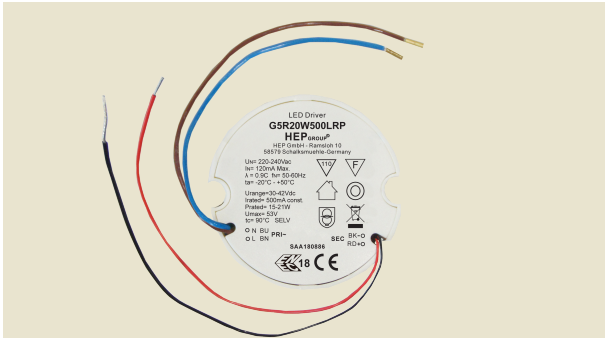


**LED Driver with Low Output Ripple**



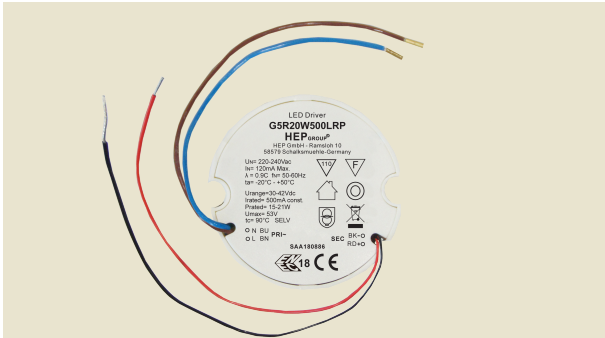
**Approval Marks**



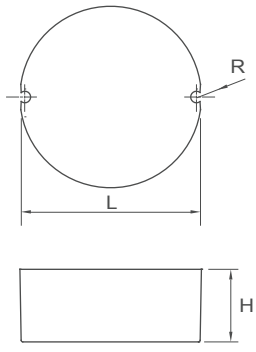
**Electronic**

Parameter	Conditions	Min	Nom	Max	Unit
I/P Voltage Range		198	220-240	264	Vac
Input Frequency		47	50-60	63	Hz
Input Current	Full load @230Vac	-	-	120	mA
Input Power	High Power LED	18.7	-	25	mA
Output Voltage Range		30	-	42	Vdc
Output Current Range	@220V~240V	475	500	525	mA
Open-circuit Voltage		-	-	53	Vdc
Rated Output Power		15	-	21	W
THD		-	-	15	%
Efficiency	Full Load	-	86	-	%
No-load Power	No load @230Vac	-	-	0.5	W
Rise Time		-	-	500	ms
Start-up Delay		-	-	500	ms
Output Current Overshoot		-	-	8	%
Light Pulsation	Full Load	-	-	5	%
Typical output LF current ripple	P-P @Full Load	-	-	8	%
Power Factor	Full Load@230VAC	0.90	-	-	-
Protection	Short Circuit Protection	Auto recovery			
	Open circuit Protection	Max output voltage at no load			
	Over-Load Protection	Auto recovery			
Case Temperature(Tc)		-	-	+90	°C
External Operating Temperature		-20	-	+50	°C
Operating Humidity Range		10	-	95	%
Storage Temp. Range		-40	-	+85	°C
Lifetime	Full Load @ Ta = 50°C	-	50,000	-	hrs
Case Dimensions	∅L x H	55	-	22	mm

**LED Driver with Low Output Ripple**



**Physical Parameter**

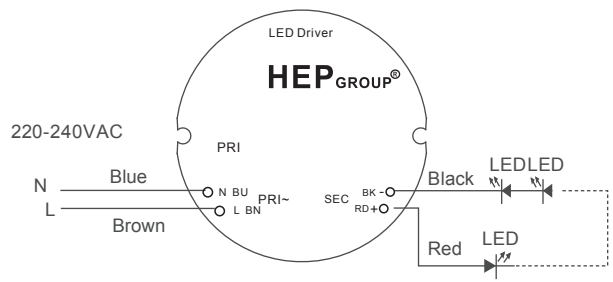


L : 55 mm H : 22 mm R : 1.7 mm  
 Tolerance :  $\geq 0 \sim 100 \geq \pm 0.5\text{mm}$   
 $100 \geq \pm 1\text{ mm}$

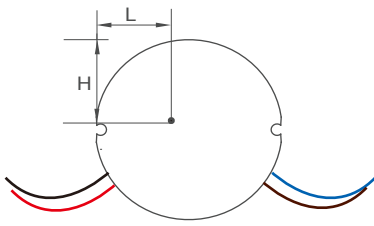
Terminal Block : Hard Wires : PRI : Blue / Brown 130mm AWG#20  
 SEC : Red / Black 135mm AWG#22

Housing Material : Polycarbonate / Potting  
 Soldering : Lead-Free, Comply With RoHS  
 Label : Surface Print

**Wiring Diagram**



**TC point at bottom side of the case**



L : 23 mm H : 24 mm