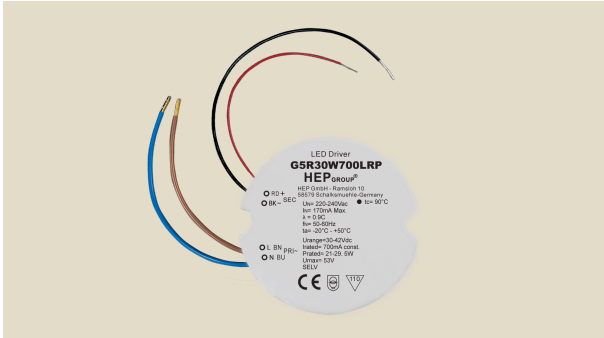


LED Driver with Low output ripple

220-240VAC

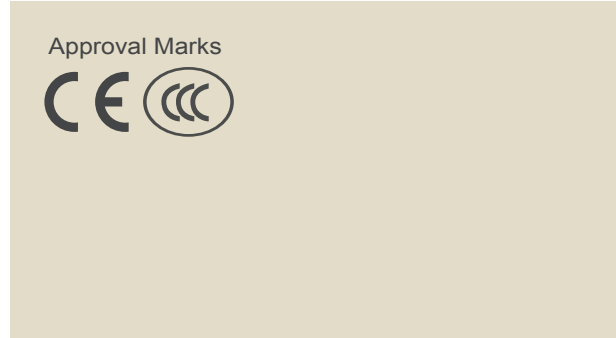
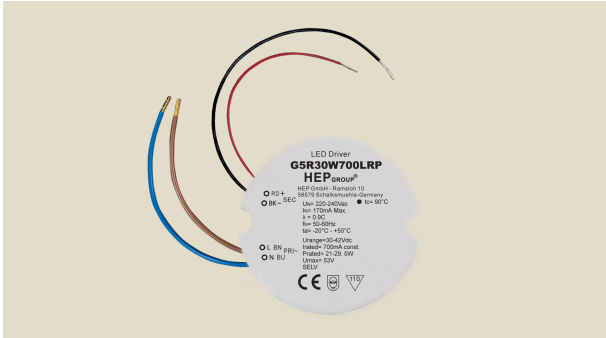


Electronic

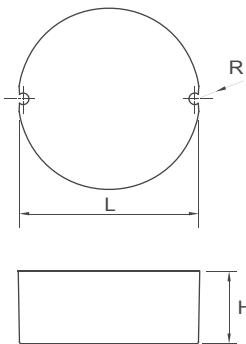
Parameter	Conditions	Min	Nom	Max	Unit
I/P Voltage Range		198	220-240	264	Vac
Input Frequency		50	50-60	60	Hz
Input Power	G5R30W600LRP High Power LED @230Vac	21.5	-	30	W
	G5R30W700LRP	25	-	35	W
	G5R30W800LRP	28.5	-	37.5	W
Input Current	G5R30W600LRP Full load @230Vac	-	-	150	mA
	G5R30W700LRP	-	-	170	mA
	G5R30W800LRP	-	-	175	mA
Output Voltage Range	G5R30W600/700LRP	30	-	42	Vdc
	G5R30W800LRP	30	-	40	Vdc
Output Current Range	G5R30W600LRP @220-240Vac	575	600	625	mA
	G5R30W700LRP @220-240Vac	675	700	725	mA
	G5R30W800LRP @220-240Vac	775	800	825	mA
Open-circuit Voltage		-	53	-	Vdc
Rated Output Power	G5R30W600LRP	18	-	25	W
	G5R30W700LRP	21	-	29.5	W
	G5R30W800LRP	24	-	32	W
THD		-	-	15	%
Efficiency	Full Load	-	88	-	%
No-load Power	No load @230Vac	-	-	0.5	W
Rise Time		-	-	500	ms
Start-up Delay		-	-	500	ms
Typical output LF Current Ripple	P-P @Full Load	-	-	5	%
Power Factor	Full Load@230VAC	0.9C	-	-	-
Protection	Short Circuit Protection		Auto recovery		
	Open circuit Protection		Max output voltage at no load		
	Over-Load Protection		Auto recovery		
Case Temperature(Tc)		-	-	+ 90	°C
External Operating Temperature		-20	-	+ 50	°C
Operating Humidity Range		10	-	95	%
Storage Temp. Range		-40	-	+ 85	°C
Lifetime	Full Load @ Ta = 50°C	-	50,000	-	hrs
Case Dimensions	∅ L x H	65	-	27	mm

LED Driver with Low output ripple

220-240VAC



Physical Parameter



L : 65 mm H : 27 mm R : 1.7mm
 Tolerance : $\geq 0 \sim 100 > \pm 0.5\text{mm}$
 $100 \geq \pm 1 \text{ mm}$

Terminal Block : Hard Wires : PRI : Blue / Brown 13 mm AWG#20
 SEC : Red / Black 135mm AWG#22

Housing Material : Polycarbonate / Potting
 Soldering : Lead-Free, Comply With RoHS
 Label : Surface Print

Wiring Diagram
220-240VAC

