

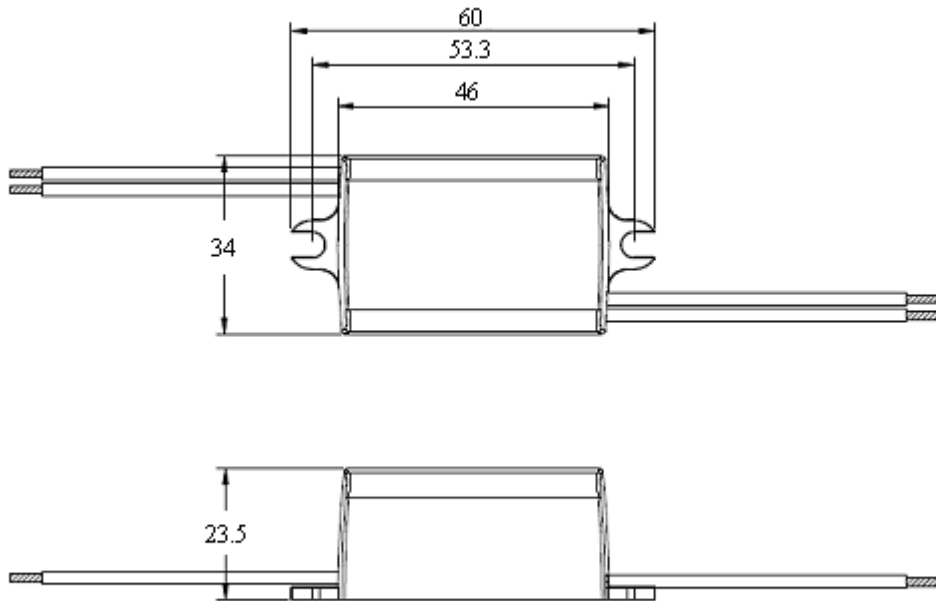
- ▲Input Voltage 100-240VAC
- ▲Protections: short circuit/over load/over voltage
- ▲IP65 Ingress protection
- ▲Power Factor 0.5
- ▲Efficiency $\geq 76\%$
- ▲Class II, SELV, built-in
- ▲3 years warranty



SPECIFICATION

Input	Rated input voltage	100-240VAC				
	Range of input voltage	90-264VAC				
	Frequency(Hz)	50/60 Hz				
	Power Factor	0.5 \pm 0.05 @100-240VAC				
	Input Current max	0.19A MAX @Full Load,90VAC				
	Start-up time	<0.5S				
	Unload Power Consumption	$\leq 0.5W$				
	Inrush Current	15A MAX. @Full Load,240VAC				
	Leakage Current	<0.5mA(240VAC)				
Output	Constant Current Note.3	150mA	350mA	500mA	...	700mA
	Unload voltage Max.	60VDC	25VDC	22VDC	...	13VDC
	Voltage Range(VDC)	20-40VDC	12-18VDC	6-12VDC	...	2.8-9VDC
	Rated load	6W Max.	6.3W Max.	6W Max.	...	6.3W Max.
	Current Accuracy	$\pm 5\%$				
	Voltage Regulation	$\leq 5\%$ @Full Load				
	Load Regulation	$\leq 8\%$	$\leq 5\%$			
	Hold-up Time	1s max. @Full Load				
	Ripple & Noise Note.2	<15mAp-p	<35mAp-p	<50mAp-p	...	<70mAp-p
	Efficiency(Typ.)	$\geq 80\%$	$\geq 80\%$	$\geq 80\%$...	$\geq 76\%$
Protection	Over Load Protection	105-120% Protection type: Auto Resume				
	Over Voltage Protection	>60VDC	>25VDC	>22VDC	...	>13VDC
	Short circuit Protection	Protection type: Auto Resume				
Environment	Operating Temperature	-10 $^{\circ}$ C ... +50 $^{\circ}$ C				
	tc	80 $^{\circ}$ C				
	Storage Temperature	-20 $^{\circ}$ C ... +60 $^{\circ}$ C				
	Humidity	10%-90%RH				
	Life time	>30,000h @50 $^{\circ}$ C				
Others	Dimension	60X34X23.5(LXWXH)mm				
Safety & EMC	Safety standards	EN 61347-1; EN61347-2-13				
	Withstand voltage	Input-Output: 3750V/5mA/1min				
	Isolation resistance	Input-Output: $\geq 4M\Omega$ @500VDC				
	EMI	EN55015(Class I & Class II); EN61000-3-2 Class A; EN61000-3-3				
	EMS	EN 61547; EN 61000-4-2 — Performance Criteria B; EN 61000-4-5 — 500V; Performance Criteria C				
Note	<p>1.All parameters NOT specially mentioned are measured at 240VAC input , rated load and 25$^{\circ}$C of ambient temperature.</p> <p>2.Ripple & Noise are measured at 20MHz of bandwidth by using a 300mm twisted pair-wire terminated with a 0.1uF & 47 uF parallel capacitor.</p> <p>3.Output current can be from 150mA to 700mA and increasing in multiples of 50mA. Please see Model list below and contact EAGLERISE for details.</p>					

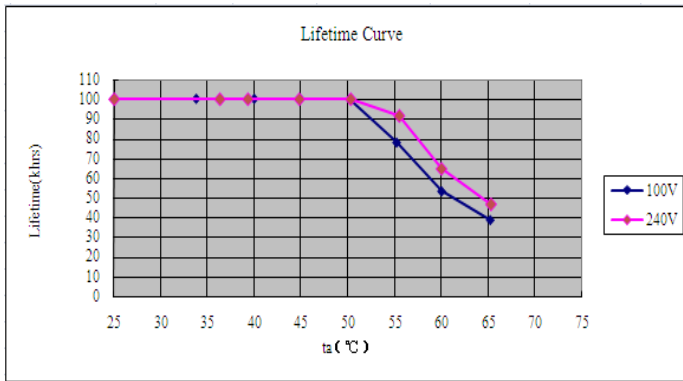
MECHANICAL SPECIFICATIONS



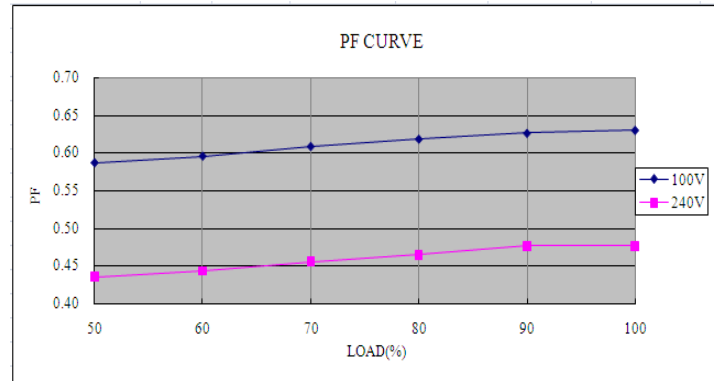
Model list

Model number	Input			Output			
	Voltage (VAC)	Max.Current (A)	Frequency (Hz)	Constant current (mA)	Normal working voltage (VDC)	No load working voltage (VDC)	Max. Power(W)
EBP006C0150SHSP1	100-240	0.19	50/60	150	20-40	60	6
EBP006C0200SHSP1				200	15-30	42	6
EBP006C0250SHSP1				250	12-24	35	6
EBP006C0300SHSP1				300	12-20	33	6
EBP006C0350SHSP1				350	12-18	25	6.3
EBP006C0400SHSP1				400	8-15	25	6
EBP006C0450SHSP1				450	7-13.5	23	6.1
EBP006C0500SHSP1				500	6-12	22	6
EBP006C0550SHSP1				550	5.5-11	20	6.1
EBP006C0600SHSP1				600	5.5-10	16	6
EBP006C0650SHSP1				650	5.5-9.5	16	6.2
EBP006C0700SHSP1				700	2.8-9	13	6.3

Lifetime vs. Ambient Temperature Curve for Io=500mA



Power Factor Characteristics for Io=500mA



Efficiency vs. Load for Io=500mA

