

	Item	Value	Remark
	Nominal voltage	220–240V	
	Nominal frequency	50–60Hz	
	AC voltage range	198–264V	
	DC voltage range (start)	NA	
	DC voltage range (operation)	NA	
	Nominal current		
Input	LNDC20W200LRP	70mA	
	LNDC20W300LRP	105mA	
	LNDC20W350LRP	120mA	
	LNDC20W400LRP	95mA	
	LNDC20W450LRP	110mA	
	LNDC20W500LRP	120mA	
	LNDC20W550LRP	100mA	
	LNDC20W600LRP	105mA	
	LNDC20W700LRP	125mA	
		Total Harmonic Distortion (THD)	< 25%
	Power factor	0.9C	Full load @230VAC
	Efficiency	80% (Typ.)	Full load @230VAC
	No-load power	NA	
	Stand-by power	< 0.5W	
	Protection class	NA	
	Inrush current	10 A / 30 us	
	Earth leakage current	NA	
Output	Nominal voltage range		
	LNDC20W200/300/350LRP	40-58 Vdc	
	LNDC20W400/450/500LRP	28-40 Vdc	
	LNDC20W550/600/700LRP	20-29 Vdc	
	Maximum voltage		
	LNDC20W200/300/350LRP	65Vdc	
	LNDC20W400/450/500LRP	52Vdc	
LNDC20W550/600/700LRP	37Vdc		

	Item	Value	Remark
	Nominal current range		
	LNDC20W200LRP	200mA	
	LNDC20W300LRP	300mA	
	LNDC20W350LRP	350mA	
	LNDC20W400LRP	400mA	
	LNDC20W450LRP	450mA	
	LNDC20W500LRP	500mA	
	LNDC20W550LRP	550mA	
	LNDC20W600LRP	600mA	
	LNDC20W700LRP	700mA	
Output	Current accuracy	± 5%	
	Typical output LF current ripple	10%	Low Frequency<120Hz
	Nominal power range		
	LNDC20W200LRP	8-11.6W	
	LNDC20W300LRP	12-17.4W	
	LNDC20W350LRP	14-20.3W	
	LNDC20W400LRP	11.2-16W	
	LNDC20W450LRP	12.6-18	
	LNDC20W500LRP	14-20W	
	LNDC20W550LRP	11-15.9W	
	LNDC20W600LRP	12-17.4	
	LNDC20W700LRP	14-20.3W	
	Maximum power	20W	
Dimming	Dimming control	DALI/Touch Dim	
	Dimming technique	Amplitude	
	PWM frequency	NA	
	Dimming range	5-100%	
	Lowest dimming current	4-8%	
	Galvanic isolation	Basic insulated to PRI and double insulated to SEC	
	Ambient temperature range $t_a$	-20°C...+50°C	
	Maximum case temperature $t_c$		$t_a = 50\text{ °C}$
	LNDC20W200/300/350LRP	75°C	
	LNDC20W400/450/500LRP	70°C	
	LNDC20W550/600/700LRP	75°C	
	Max. case temp. in fault condition	110°C	When operating under fault conditions, the temperature of the enclosure at any location should not exceed 110 °C
Environment	Storage temperature range	-40°C...+85°C	
	Relative humidity	10%...95%	
	Surge transient protection	1 kV	L/N
	Environmental rating	Indoor	
	IP rating	IP20	
	Mains switching cycles	> 100,000	
	Expected lifetime		
	LNDC20W200/300/350LRP	> 50,000 h, $t_c 75\text{ °C}$ @ $t_a 50\text{ °C}$ >100000 h, $t_c 65\text{ °C}$ @ $t_a 40\text{ °C}$	0.2 % / 1,000 h failure rate @ $t_c 75\text{ °C}$ 0.1 % / 1,000 h failure rate @ $t_c 65\text{ °C}$
LNDC20W400/450/500LRP	> 50,000 h, $t_c 70\text{ °C}$ @ $t_a 50\text{ °C}$ >100000 h, $t_c 60\text{ °C}$ @ $t_a 40\text{ °C}$	0.2 % / 1,000 h failure rate @ $t_c 80\text{ °C}$ 0.1 % / 1,000 h failure rate @ $t_c 70\text{ °C}$	
LNDC20W550/600/700LRP	> 50,000 h, $t_c 75\text{ °C}$ @ $t_a 50\text{ °C}$ >100000 h, $t_c 65\text{ °C}$ @ $t_a 40\text{ °C}$	0.2 % / 1,000 h failure rate @ $t_c 75\text{ °C}$ 0.1 % / 1,000 h failure rate @ $t_c 65\text{ °C}$	

<b>Packing</b>	Gross weight/Carton	10.1 Kg
	Net weight/Carton	9 Kg
	Pcs/Carton	72 PCS
	Dimension/Carton	490(L)*270(W)*225(H)mm

#### Protections

Short- & open circuit proof, Auto. overheat regulation or cut off, Overload protection

#### Conformity & Standards

Safety standard:	EN 61347-1, EN 61347-2-13, EN 62493
Performance:	EN 62384
SAA standard:	AS/NZS 61347.1, AS/NZS IEC 61347.2.13
EMC standard:	EN 55015, EN 61000-3-2, EN 61000-3-3, EN 61547
DALI protocol standard:	EN 62386-101, EN 62386-102, EN 62386-207

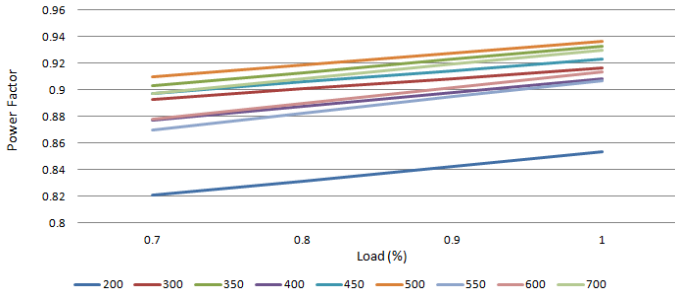
#### Cable information

<b>PRI</b> Connection	L	N
Color	Brown	Blue
Wire type	7022	7022
Wire diameter	AWG18	AWG18
Wire length	130mm	128mm
Stripping	6mm	6mm

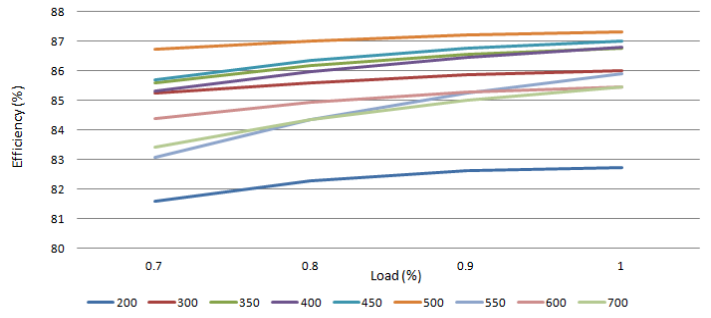
<b>Sec</b> Connection	+	-
Color	Red	Black
Wire type	1332	1332
Wire diameter	AWG22	AWG22
Wire length	141mm	138mm
Strip length	6mm	6mm

<b>DALI/Touch Dim</b> Connection	DA	DA
Color	Purple	Gray
Wire type	7022	7022
Wire diameter	AWG20	AWG20
Wire length	141mm	141mm
Stripping	10mm	10mm

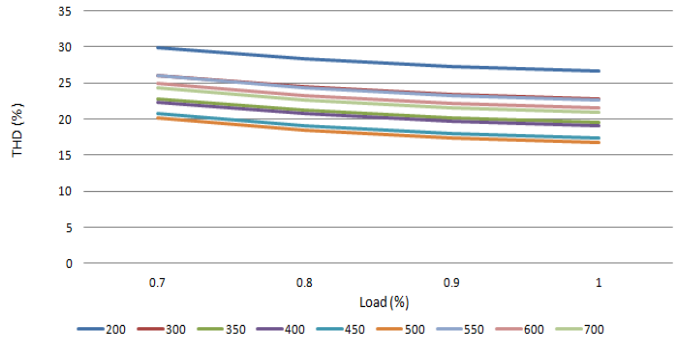
### Power Factor vs Load



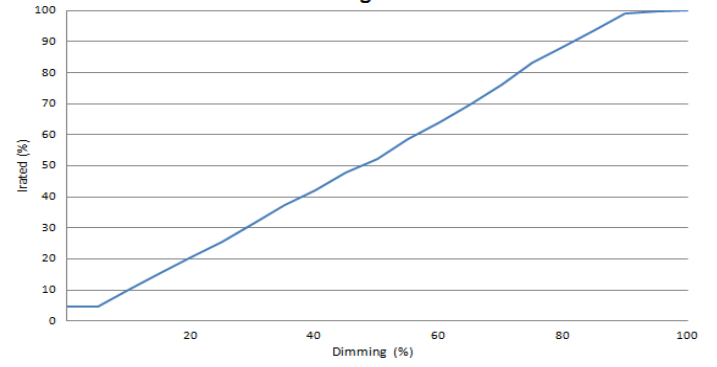
### Efficiency vs Load



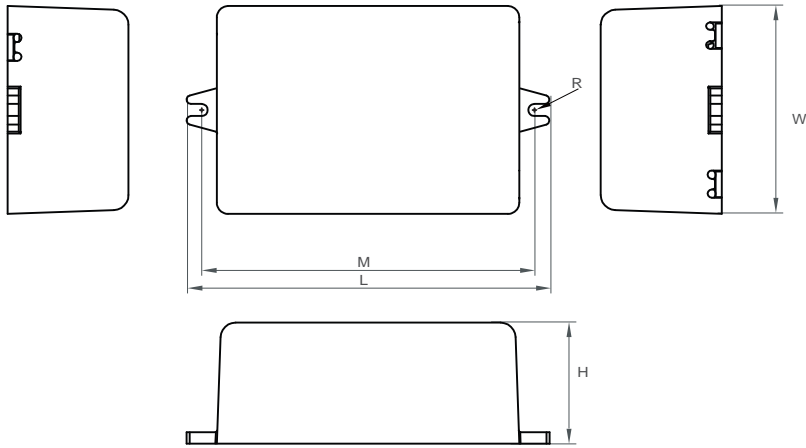
### THD vs Load



### Dimming Curve



**Physical  
Parameter**



L : 88 mm    M : 80.3 mm    R : 1.6 mm

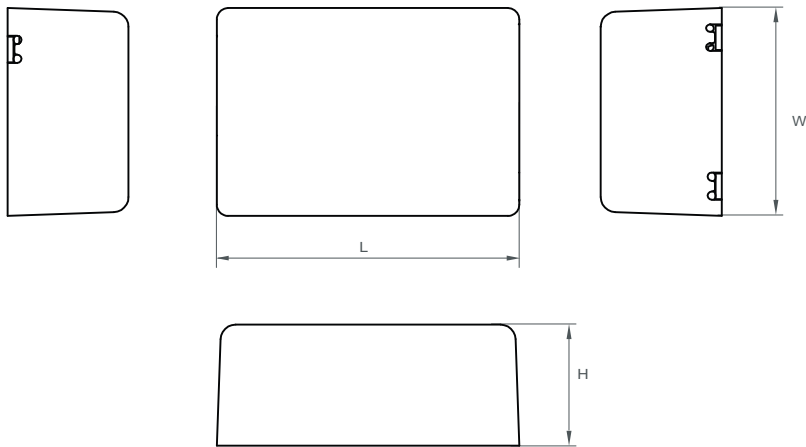
W : 45 mm    H : 25 mm

Tolerance : +/-1 mm , R : +/-0.5 mm

Housing Material : Polycarbonate

Soldering : Lead-Free, Comply With RoHS

Label : Surface Print



L : 73 mm    H : 25 mm

W : 45 mm

Tolerance : +/-1 mm

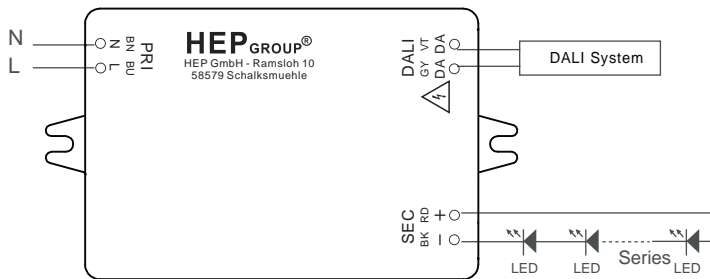
Housing Material : Polycarbonate

Soldering : Lead-Free, Comply With RoHS

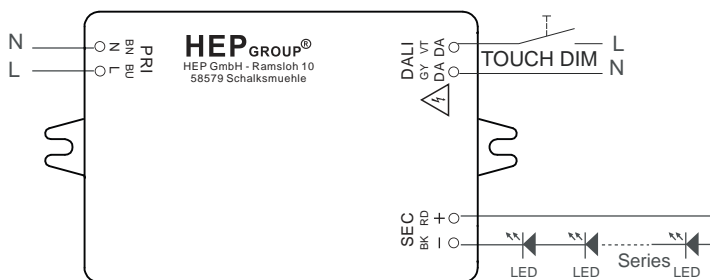
Label : Surface Print

## Wiring Diagram

### DALI



### TOUCH DIM



#### \* Touch Dim

Short push (<0.6sec.)      Push to turn ON-OFF  
 Long push (>0.6sec.)      Dimming up or down

#### Synchronization of Touch DIM

If a large number of driver with Touch Dim is operated in a system there is a chance that an driver will operate out of synchronization with the others(= different dimming level setting or different switching state).

Synchronism can be restored as follows:

- 1.Step: Long push      all the lamps are switched on
- 2.Step: Short push      all the lamps are switched off
- 3.Step: Long push      all the lamps are switched on the minimum dimming setting of the drivers and continuously fade up to the desired dimming level, then release push bottom.

Max. lead length : 20 M

Max. parallel units : 15 pcs