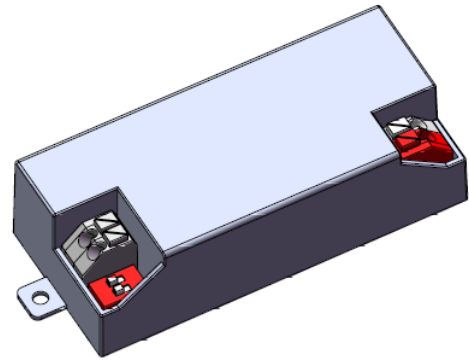


**OT FIT 15/220-240/500 CS S MINI**

Constant Current LED Power Supply

225mA - 250mA - 325mA- 350mA

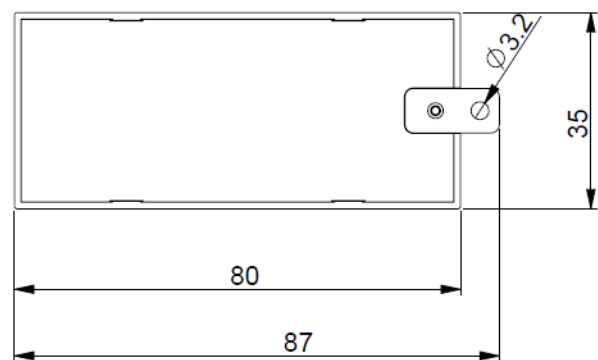
OPTOTRONIC® LED Power Supply with high reliability in extra mini size. It equips with 4 selectable currents fits in light fixtures for shop, office lighting or other indoor applications which require high quality light and compact luminaries

**Benefits:**

Mini housing for flexible fixture design;  
High quality of light with output current ripple < 3%;  
High operating temperature up to + 55 °C  
1 driver with 4 output currents;  
Long lasting and high reliability  
5 years guarantee;

**Applications**

Downlights, Spotlights and other indoor luminaries



Approval marks (under preparation if not on label)



mounting plate removable

**Product features**

- Output currents: 225/250/325/350mA
- Output voltage: 30V<sub>DC</sub> – 42V<sub>DC</sub>
- Output power: 6.7W – 14.7W
- Suitable for class I and II luminaires
- Fixed Output ( no dimming)
- Mini size housing
- Low output current ripple < 3%
- High efficiency up to 88%
- SELV
- 50'000 hours lifetime at tc max 75°C

## Electrical Specifications

	Item	Value	Unit	Remarks
INPUT	Nominal voltage	220 – 240	V <sub>AC</sub>	
	Nominal frequency	50 / 60	Hz	
	AC voltage range	198 – 264	V <sub>AC</sub>	Safety voltage range
	DC voltage range	NA	V	
	Maximum voltage	275	V	2hrs
	Nominal current	73	mA	230V, Refer to Table 1 for details
	Total Harmonic Distortion (THD)	< 10	%	Full load, 230 V, 50 Hz / see graphs
	Power factor	0.95		Full load, 230 V, 50 Hz / see graphs
	Efficiency	88	%	Full load, 230 V, 50 Hz, typical / see graphs
	No-load power	< 0.5	W	230V, typical
	Power loss	2.1	W	at 230V, Input power 16.8W max. Refer to Table 1 for details
	Protection class	NA		Suitable for class I and class II luminaires
	Inrush current	<16	A	t <sub>width</sub> = 100 μs typical (measured at 50% Ipeak)
	Max. units per circuit breaker	B16: 56; B10: 34 C16: 94; C10: 58		
Leakage current	< 0.7	mA	Output floating	
OUTPUT	Nominal voltage range	30 – 42	V <sub>DC</sub>	Refer to Table 1 for details
	Maximum voltage	60	V <sub>DC</sub>	Open circuit
	Nominal current range	225/250/325/350	mA	
	Current accuracy	+/- 7.5	%	
	Current ripple	< 3	%	Ripple / average @ 100 Hz
	Nominal power range	6.7 – 14.7	W	Partial Load. Refer to Table 1 for details
	Maximum power	14.7	W	Refer to Table 1 for details
	Galvanic isolation	SELV		Output to mains - Touch current < 0.7 mA
DIMMING	Dimming control	No		Not dimmable
	Dimming range	NA	%	
	Dimming technique	NA		
	Frequency	NA	Hz	
	Galvanic isolation	NA		
ENVIRONMENT	Ambient temperature range t <sub>a</sub>	-20 ...+55	°C	Refer to Table 1 for details
	Maximum case temperature t <sub>c,max</sub>	75	°C	Measured on t <sub>c</sub> point indicated on the product label.
	Max. Case temp. in fault condition	110	°C	
	Storage temperature range	-20 ...+80	°C	Cool down before operating
	Relative humidity	5 ... 85	%	Not condensing
	Surge transient protection	1   2	kV	L/N   LN/PE acc. IEC 61547
	Environmental rating	Indoor		
	IP rating	IP 20		
	Mains switching cycles	> 100'000		
Expected lifetime	50'000	hrs	t <sub>c,max</sub> = 75°C with max. failure rate of 10 %	

### Protections

#### Over temperature

Automatic, reversible

#### Overload

Automatic, reversible

#### No load

Yes. Limitation of Output voltage < 60V

#### Short-circuit

Automatic, reversible

#### Input overvoltage

Maximum allowed input voltage 275V AC



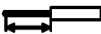
#### Output overvoltage

Yes. Limitation of Output voltage < 60V

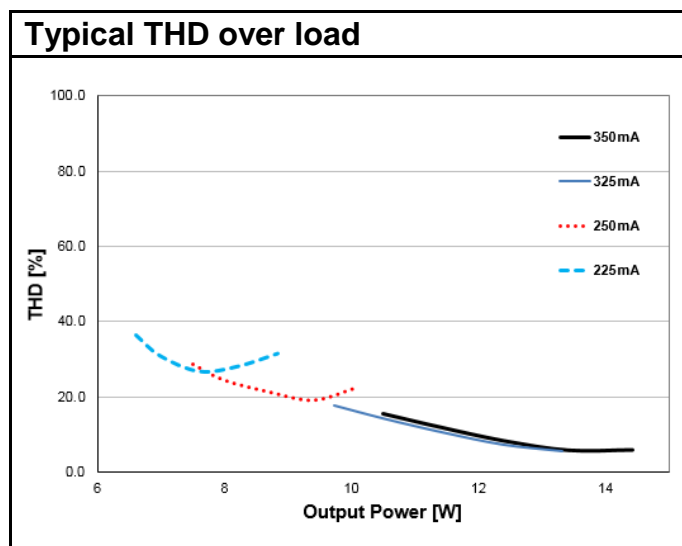
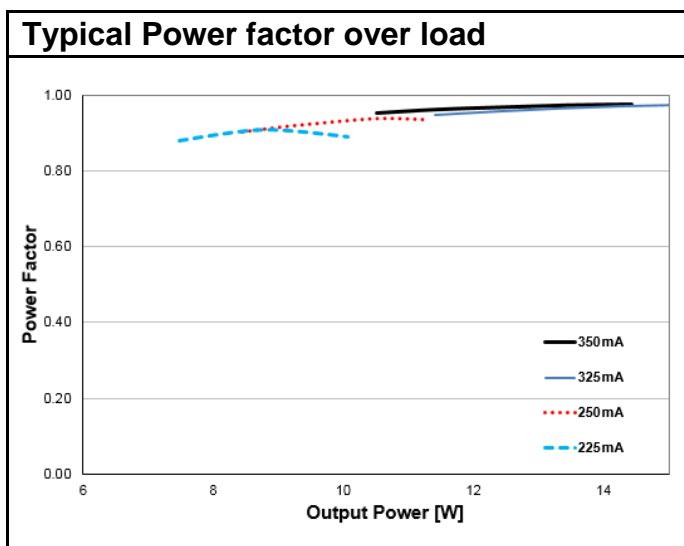
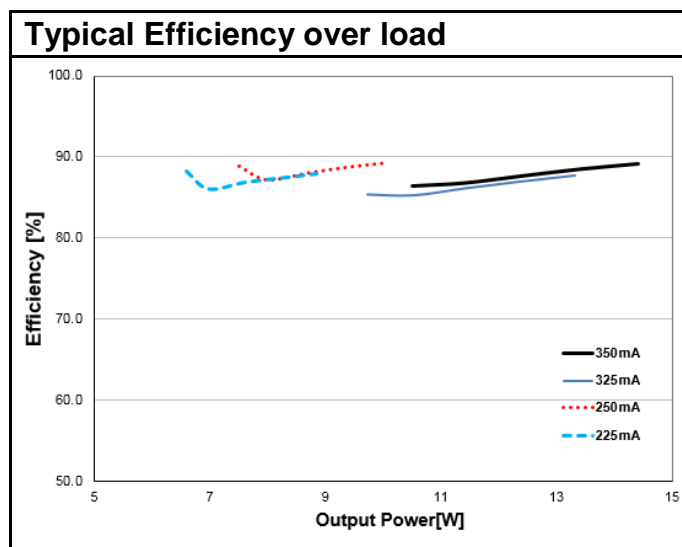
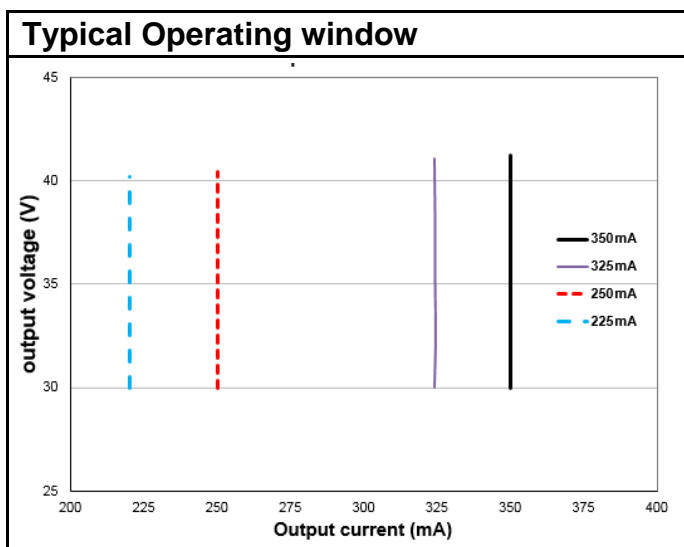
### Wiring Diagram

Terminal:	Push in terminals
Max. cable length	2 m
Geometry (l x b x h):	80 x 35 x 22 mm (without mounting plate) 87 x 35 x 22 mm (with mounting plate)
Weight:	55g

#### Wire preparation:

Push in  
s: 0.5-1.5   
f: 0.75-1.5   
  
7-8 mm

Hot plug-in or secondary switching of LEDs is not permitted and may cause a very high current to the LEDs.



	225	275	325	350
I out (mA)	225	275	325	350
U min [V]	30	30	30	30
U max [V]	42	42	42	42
P min [W]	6.75	8.25	9.75	10.5
P max [W]	9.45	11.55	13.65	14.7
Ta [°C]	55	55	55	55
Tc [°C]	75	75	75	75
Line Current, nominal@230V mA	47	57	68	73
Max Power Loss@230V [W]	1.35	1.60	2	2.1
Input Power @230V [W]	10.8	13.2	15.5	16.8

Pin1	Pin2	Current
ON	ON	350
ON	OFF	325
OFF	ON	250
OFF	OFF	225

Current selection by DIP-switch

**Standards**

Safety: IEC 61347-1, IEC 61347-2-13

Performance: IEC 62384

Harmonic content: IEC 61000-3-2

Immunity: IEC 61000-3-3

IEC 61547

EAN10	Product name	Pieces / box
4062172013406	OT FIT 15/220-240/350 CS S MINI	20pcs

**Disclaimer (Engineering Samples)**

This product is a demonstration model from our development laboratories made available for your information only.

The model is not binding in respect to its fitness for use, i.e. service life, luminous flux, color temperature and performance.

Prior to production the design, including dimensions, is subject to modification.

You will, therefore, appreciate that at this stage of development we are unable to assume any liability also for damages which may be caused by this product.

Should you urgently require binding information for the preparation of construction data for your applications, please contact our marketing department.

OSRAM GmbH  
Berliner Allee 65  
86153 Augsburg  
Germany  
www.osram.com