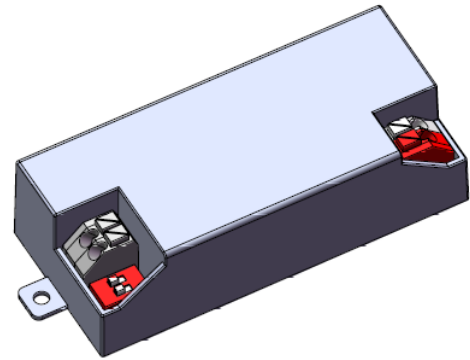


OT FIT 20/220-240/500 CS S MINI

Constant Current LED Power Supply

400mA - 450mA - 475mA- 500mA



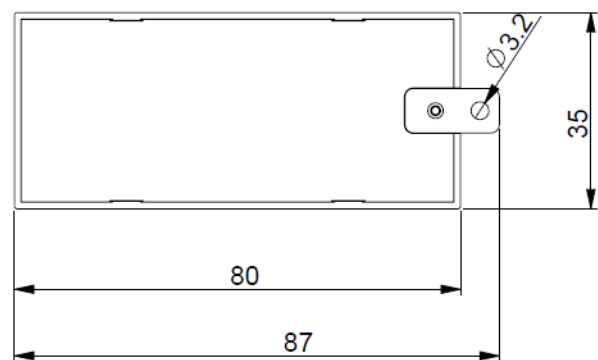
OPTOTRONIC® LED Power Supply with high reliability in extra mini size. It equips with 4 selectable currents fits in light fixtures for shop, office lighting or other indoor applications which require high quality light and compact luminaries

Benefits:

Mini housing for flexible fixture design;
High quality of light with output current ripple < 3%;
1 driver with 4 output currents;
Long lasting and high reliability
5 years guarantee;

Applications

Downlights, Spotlights and other indoor luminaries



Approval marks (under preparation if not on label)



mounting plate removable

Product features

- Output currents: 400/450/475/500mA
- Output voltage: 30V_{DC} – 42V_{DC}
- Output power: 12W – 21W
- Suitable for class I and II luminaires
- Fixed output (no dimming)
- Mini size housing
- Low output current ripple < 3%
- High efficiency up to 89%
- SELV
- 50'000 hours lifetime at tc max 80°C

Electrical Specifications

	Item	Value	Unit	Remarks
INPUT	Nominal voltage	220 – 240	V _{AC}	
	Nominal frequency	50 / 60	Hz	
	AC voltage	198 – 264	V _{AC}	Safety voltage range
	DC voltage range	NA	V	
	Maximum voltage	275	V	2hrs
	Nominal current	106	mA	230V, Refer to Table 1 for details
	Total Harmonic Distortion (THD)	< 10	%	Full load, 230 V, 50 Hz / see graphs
	Power factor	0.95		Full load, 230 V, 50 Hz / see graphs
	Efficiency	89	%	Full load, 230 V, 50 Hz, typical / see graphs
	No-load power	< 0.5	W	230V, typical
	Power loss	2.6	W	at 230V, Input power 23.6W max. Refer to Table 1 for details
	Protection class	II		Suitable for class I and class II luminaires
	Inrush current	<16	A	t _{width} = 100 μs typical (measured at 50% Ipeak)
	Max. units per circuit breaker	B16: 56; B10: 34 C16: 94; C10: 58		
Leakage current	< 0.7	mA	Output floating	
OUTPUT	Nominal voltage range	30 – 42	V _{DC}	Refer to Table 1 for details
	Maximum voltage	60	V _{DC}	Open circuit
	Nominal current range	400/450/475/500	mA	
	Current accuracy	+/- 7.5	%	
	Current ripple	< 3	%	Ripple / average @ 100 Hz
	Nominal power range	12 – 21	W	Partial Load. Refer to Table 1 for details
	Maximum power	21	W	Refer to Table 1 for details
	Galvanic isolation	SELV		Output to mains - Touch current < 0.7 mA
DIMMING	Dimming control	No		Not dimmable
	Dimming range	NA	%	
	Dimming technique	NA		
	Frequency	NA	Hz	
	Galvanic isolation	NA		
ENVIRONMENT	Ambient temperature range t _a	-20 ...+50	°C	Refer to Table 1 for details
	Maximum case temperature t _{c,max}	80	°C	Measured on t _c point indicated on the product label.
	Max. Case temp. in fault condition	110	°C	
	Storage temperature range	-20 ...+80	°C	Cool down before operating
	Relative humidity	5 ... 85	%	Not condensing
	Surge transient protection	1 2	kV	L/N LN/PE acc. IEC 61547
	Environmental rating	Indoor		
	IP rating	IP 20		
	Mains switching cycles	> 100'000		
Expected lifetime	50'000	hrs	t _{c,max} = 80°C with max. failure rate of 10 %	

Protections

Over temperature

Automatic, reversible

Overload

Automatic, reversible

No load

Yes. Limitation of Output voltage < 60V

Short-circuit

Automatic, reversible

Input overvoltage

Maximum allowed input voltage 275V AC

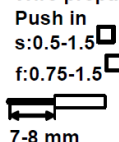
Output overvoltage

Yes. Limitation of Output voltage < 60V

Wiring Diagram

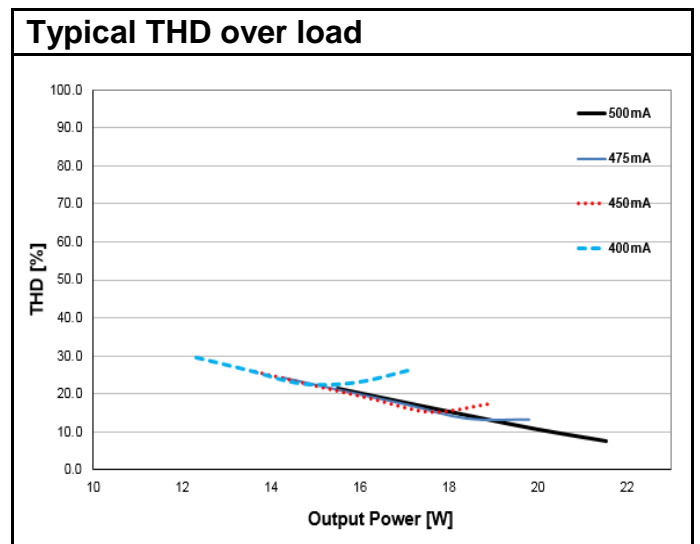
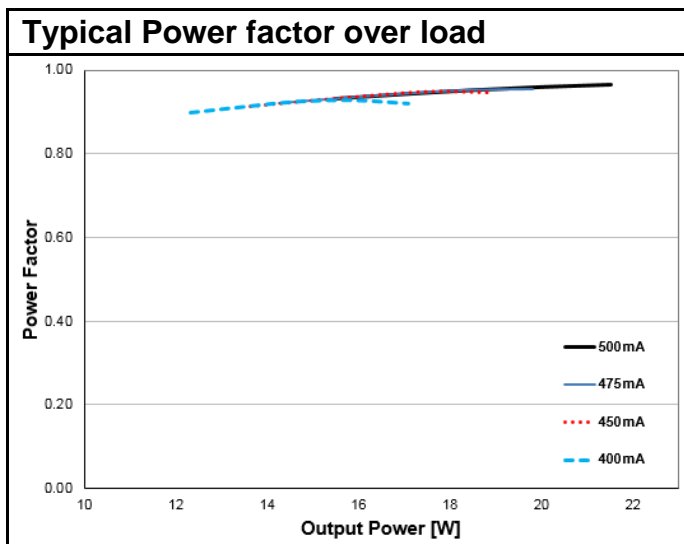
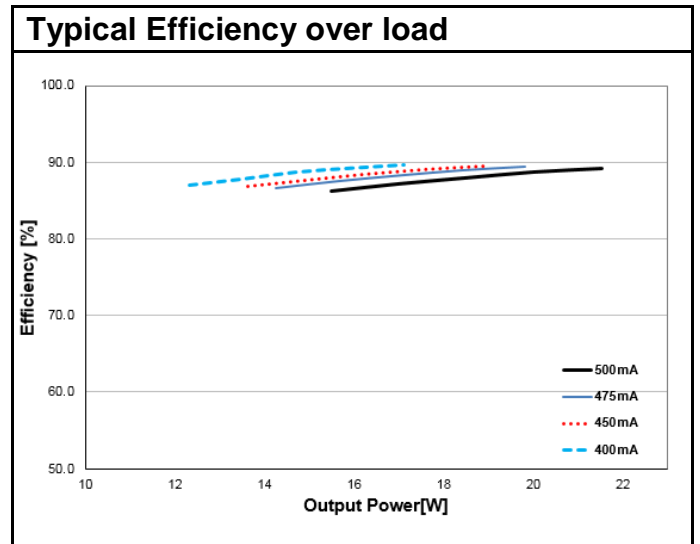
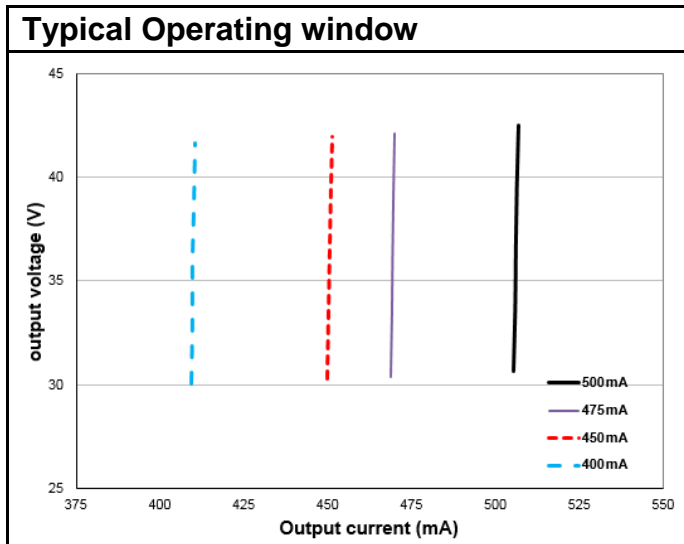
Terminal:	Push in terminals
Max. cable length	2 m
Geometry (l x b x h):	80 x 35 x 22 mm (without mounting plate) 87 x 35 x 22 mm (with mounting plate)
Weight:	55g

Wire preparation:



For built-in: 0.5-1.5 mm²

Hot plug-in or secondary switching of LEDs is not permitted and may cause a very high current to the LEDs.



I out (mA)	400	450	475	500
U min [V]	30	30	30	30
U max [V]	42	42	42	42
P min [W]	12	13.5	14.5	15.0
P max [W]	16.8	18.9	20.0	21.0
Ta [°C]	50	50	50	50
Tc [°C]	80	80	80	80
Line Current, nominal@230V mA	82	93	98	106
Max Power Loss@230V [W]	2.1	2.4	2.5	2.6
Input Power @230V [W]	18.9	21.3	22.5	23.6

Pin1	Pin2	Current
ON	ON	500
ON	OFF	475
OFF	ON	450
OFF	OFF	400

Current selection by DIP-switch

Standards

Safety: IEC 61347-1, IEC 61347-2-13
Performance: IEC 62384
Harmonic content: IEC 61000-3-2
Immunity: IEC 61000-3-3
IEC 61547

EAN10	Product name	Pieces / box
4052899587960	OT FIT 20/220-240/500 CS S MINI	20pcs

OSRAM GmbH
Berliner Allee 65
86153 Augsburg
Germany
www.osram.com