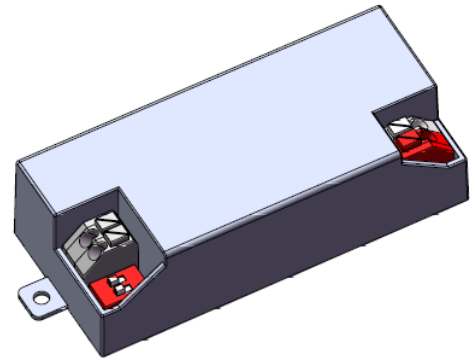


**OT FIT 38/220-240/900 CS S MINI**

Constant Current LED Power Supply

800mA - 850mA - 875mA- 900mA



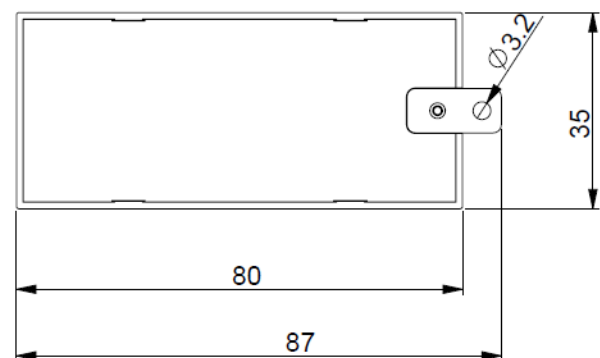
OPTOTRONIC® LED Power Supply with high reliability in extra mini size. It equips with 4 selectable currents fits in light fixtures for shop, office lighting or other indoor applications which require high quality light and compact luminaires

**Benefits:**

Mini housing for flexible fixture design;  
 High quality of light with output current ripple < 3%;  
 High operating temperature up to  $t_a +55^\circ\text{C}$  (800mA @  $60^\circ\text{C}$ )  
 1 driver with 4 output currents;  
 Long lasting and high reliability  
 5 years guarantee;

**Applications**

Downlights, Spotlights and other indoor luminaires



Approval marks (under preparation if not on label)



mounting plate removable

**Product features**

- Output currents: 800/850/875/900mA
- Output voltage:  $30\text{V}_{\text{DC}} - 42\text{V}_{\text{DC}}$
- Output power:  $24\text{W} - 37.8\text{W}$
- Suitable for class I and II luminaires
- Fixed output ( no dimming)
- Mini size housing
- Low output current ripple < 3%
- High efficiency up to 90%
- SELV
- Up to 50,000 hours lifetime at  $t_c 85^\circ\text{C}$

## Electrical Specifications

	Item	Value	Unit	Remarks
INPUT	Nominal voltage	220 – 240	V <sub>AC</sub>	
	Nominal frequency	50 / 60	Hz	
	AC voltage	198 – 264	V <sub>AC</sub>	Safety voltage range
	DC voltage range	NA	V	
	Maximum voltage	275	V	2hrs
	Nominal current	184	mA	230V, Refer to Table 1 for details
	Total Harmonic Distortion (THD)	< 10	%	Full load, 230 V, 50 Hz / see graphs
	Power factor	0.95		Full load, 230 V, 50 Hz / see graphs
	Efficiency	90	%	Full load, 230 V, 50 Hz, typical / see graphs
	No-load power	< 0.5	W	230V, typical
	Power loss	4.2	W	at 230V, Input power 42.0W max. Refer to Table 1 for details
	Protection class	NA		Suitable for class I and class II luminaires
	Inrush current	<16	A	t <sub>width</sub> = 100 μs typical (measured at 50% I <sub>peak</sub> )
	Max. units per circuit breaker	B16: 26; B10: 16 C16: 43; C10: 26		
Leakage current	< 0.7	mA	Output floating	
OUTPUT	Nominal voltage range	30 – 42	V <sub>DC</sub>	Refer to Table 1 for details
	Maximum voltage	60	V <sub>DC</sub>	Open circuit
	Nominal current range	800/850/875/900	mA	
	Current accuracy	+/- 7.5	%	
	Current ripple	< 3	%	Ripple / average @ 100 Hz
	Nominal power range	27 – 37.8	W	Partial Load. Refer to Table 1 for details
	Maximum power	37.8	W	Refer to Table 1 for details
	Galvanic isolation	SELV		Output to mains - Touch current < 0.7 mA
DIMMING	Dimming control	No		Not dimmable
	Dimming range	NA	%	
	Dimming technique	NA		
	Frequency	NA	Hz	
	Galvanic isolation	NA		
ENVIRONMENT	Ambient temperature range t <sub>a</sub>	-20 ...+55	°C	@ output currents 850/875/900 mA
		-20 ...+60	°C	@ output currents 800 mA
	Maximum case temperature t <sub>c</sub> max	95	°C	Measured on t <sub>c</sub> point indicated on the product label.
	Max. Case temp. in fault condition	110	°C	
	Storage temperature range	-20 ...+80	°C	Cool down before operating
	Relative humidity	5 ... 85	%	Not condensing
	Surge transient protection	1   2	kV	L/N   LN/PE acc. IEC 61547
	Environmental rating	Indoor		
	IP rating	IP 20		
	Mains switching cycles	> 100'000		
Expected lifetime	35,000 50,000	hrs	t <sub>c</sub> = 95°C with failure rate of 10 % t <sub>c</sub> = 85°C with failure rate of 10 %	

### Protections

#### Over temperature

Automatic, reversible

#### Overload

Automatic, reversible

#### No load

Yes. Limitation of Output voltage < 60V

#### Short-circuit

Automatic, reversible

#### Input overvoltage

Maximum allowed input voltage 275V AC

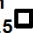
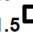

#### Output overvoltage

Yes. Limitation of Output voltage < 60V

### Wiring Diagram

Terminal: Push in terminals  
 Max. cable length: 2 m  
 Geometry (l x b x h): 80 x 35 x 22 mm (without mounting plate)  
 87 x 35 x 22 mm (with mounting plate)  
 Weight: 80g

#### Wire preparation:

Push in  
 s:0.5-1.5   
 f:0.75-1.5   
  
 7-8 mm

For built-in: 0.5-1.5 mm<sup>2</sup>

Hot plug-in or secondary switching of LEDs is not permitted and may cause a very high current to the LEDs.

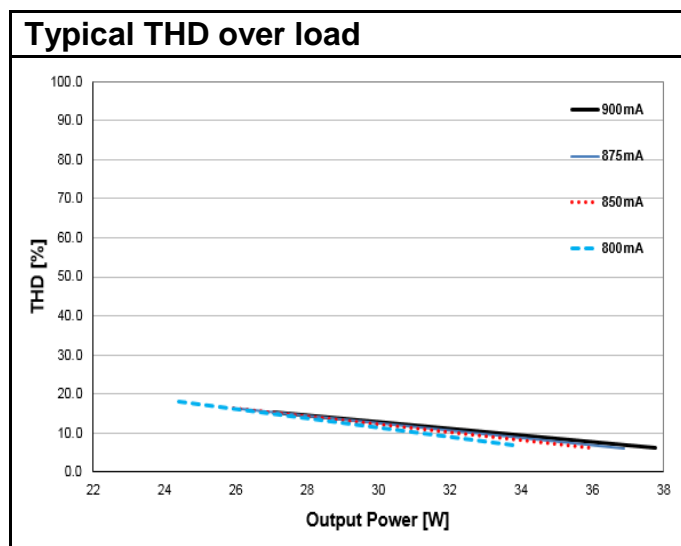
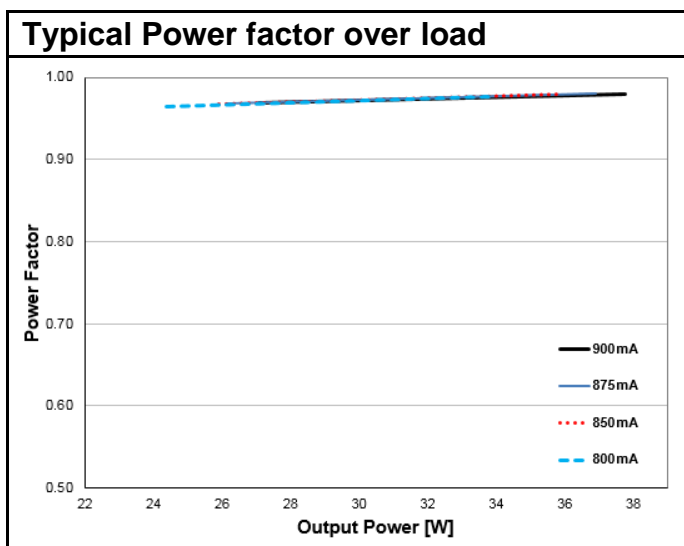
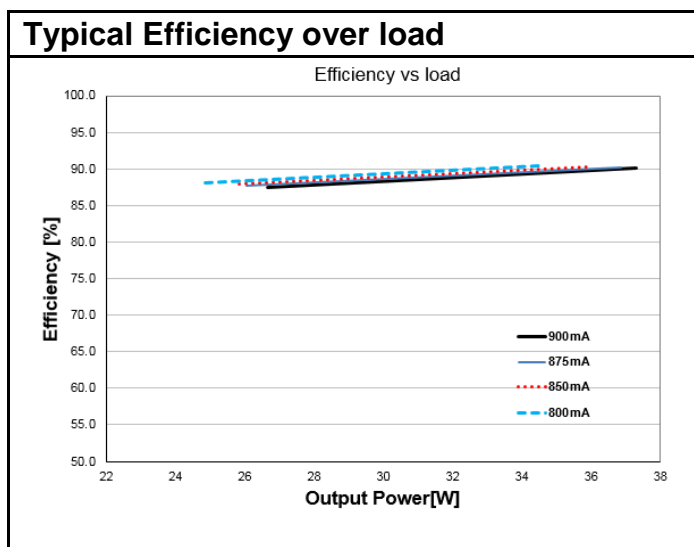
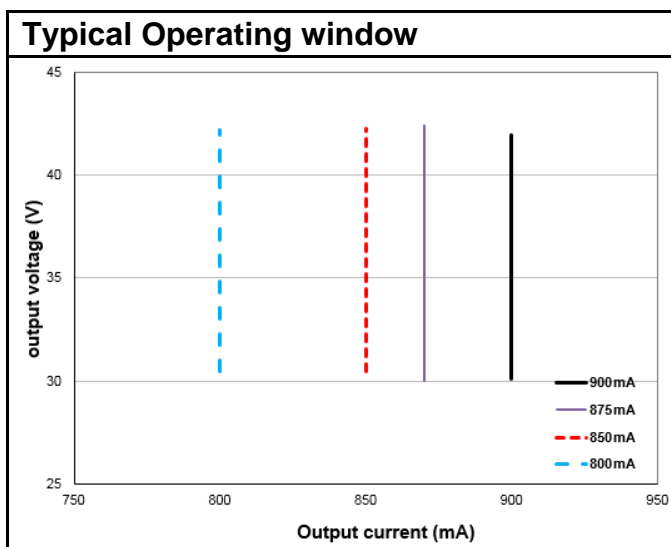


Table 1 - Rated output power and current sets

I out (mA)	800	850	875	900
U min [V]	30	30	30	30
U max [V]	42	42	42	42
P min [W]	24	25.5	26.3	27
P max [W]	33.6	35.7	36.8	37.8
Ta [°C]	60	55	55	55
Tc [°C]	95	95	95	95
Line Current, nominal@230V mA	170	180	182	184
Max Power Loss@230V [W]	3.8	4	4	4.2
Input Power @230V [W]	37.4	39.7	40.8	42.0

Pin1	Pin2	Current
ON	ON	900
ON	OFF	875
OFF	ON	850
OFF	OFF	800

Current selection by DIP-switch

**Standards**

Safety: IEC 61347-1, IEC 61347-2-13  
Performance: IEC 62384  
Harmonic content: IEC 61000-3-2  
Immunity: IEC 61000-3-3  
IEC 61547

EAN10	Product name	Pieces / box
4052899587984	OT FIT 38/220-240/900 CS S MINI	20pcs

OSRAM GmbH  
Berliner Allee 65  
86153 Augsburg  
Germany  
[www.osram.com](http://www.osram.com)