

Item	Value	Remark
Nominal voltage	220-240V	
Nominal frequency	50-60Hz	
AC voltage range	198-264V	
DC voltage range (start)	N/A	
DC voltage range (operation)	N/A	
Maximum voltage	264Vac	2 h maximum.unit might not operate in this abnormal condition
Nominal current	50mA	
Total Harmonic Distortion (THD)	< 20%	Full load @230VAC
Power factor	0.9C	Full load @230VAC
Efficiency		
G5RT7W150/350LRP	75%(Typ.)	Full load @230VAC
G5RT7W500/700LRP	72%(Typ.)	Full load @230VAC
No-load power	NA	
Stand-by power	NA	
Protection class	NA	
Inrush current	9A/23us	
Earth leakage current	NA	
Nominal voltage range		
G5RT7W150LRP	30-42Vdc	
G5RT7W350LRP	12-20Vdc	
G5RT7W500LRP	9-13Vdc	
G5RT7W700LRP	6-9Vdc	
Maximum voltage		
G5RT7W150LRP	55V	
G5RT7W350LRP	28V	
G5RT7W500LRP	21V	
G5RT7W700LRP	18V	
Nominal current range		
G5RT7W150LRP	150mA	Full load @220-240VAC
G5RT7W350LRP	350mA	Full load @220-240VAC
G5RT7W500LRP	500mA	Full load @220-240VAC
G5RT7W700LRP	700mA	Full load @220-240VAC

	Item	Value	Remark
Output	Current accuracy		
	G5RT7W350/500/700LPR	± 5%	
	G5RT7W150LPR	±7%	
	Typical output LF current ripple	± 5%	Low Frequency<120Hz
	Nominal power range		
	G5RT7W150LRP	4.5-6.3W	
	G5RT7W350LRP	4.2-7W	
	G5RT7W500LRP	4.5-6.5W	
	G5RT7W700LRP	4.2-6.3W	
	Maximum power	7W	
Dimming	Dimming control	Trailing Edge	
	Dimming technique	Amplitude	
	PWM frequency	NA	
	Dimming range	10-100%	
	Lowest dimming current	2-6%	
	Galvanic isolation	NA	
	Environment	Ambient temperature range t_a	-20°C...+50°C
Maximum case temperature t_c		80°C	
Max. case temp. in fault condition		110°C	When operating under fault conditions, the temperature of the enclosure at any location should not exceed 110 °C
Storage temperature range		-40°C...+85°C	
Relative humidity		10%...95%	
Surge transient protection		1 kV	L/N
Environmental rating		Indoor	
IP rating		IP20	
Mains switching cycles		> 100,000	
Expected lifetime		> 50,000 h, t_c 80 °C @ t_a 50 °C > 100000 h, t_c 70 °C @ t_a 40 °C	0.2 % / 1,000 h failure rate 0.1 % / 1,000 h failure rate
Packing	Gross weight/box		
	Net weight/box		
	Pcs/box		
	Dimension/box		
Protections			
Short- & open circuit proof, Auto. overheat regulation or cut off, Overload protection			
Conformity & Standards			
Safety standard:	EN 61347-1, EN 61347-2-13, EN 62493		
Performance:	EN 62384		
EMC standard:	EN 55015, EN 61000-3-2, EN 61000-3-3, EN 61547		

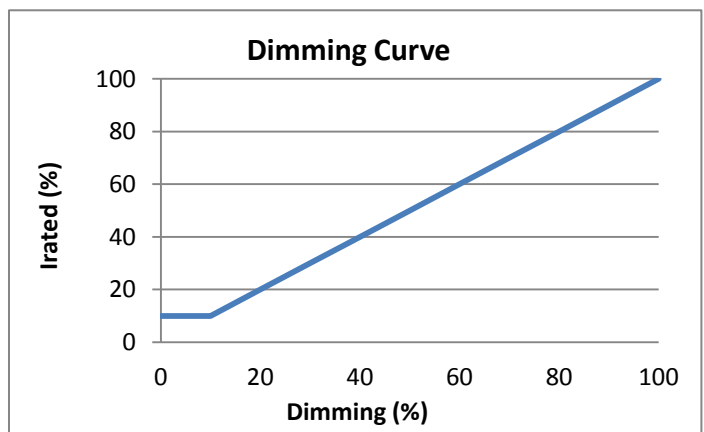
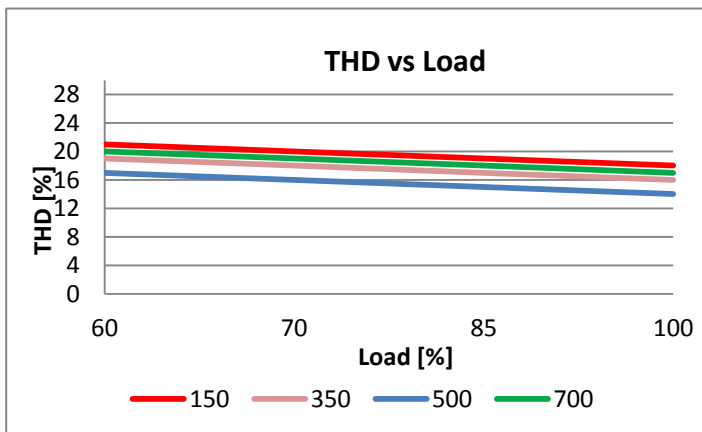
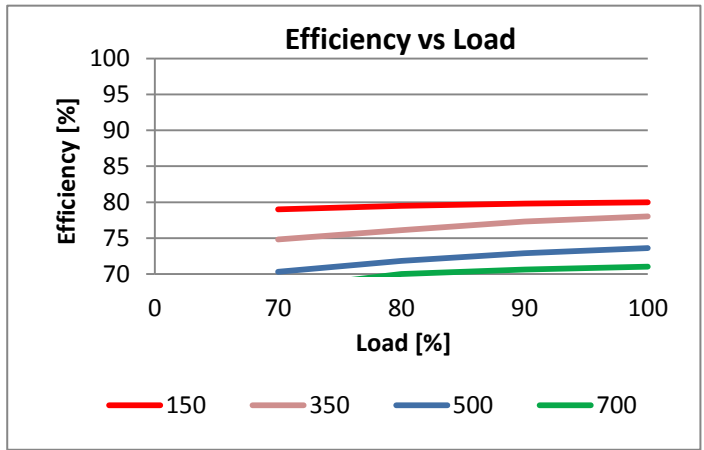
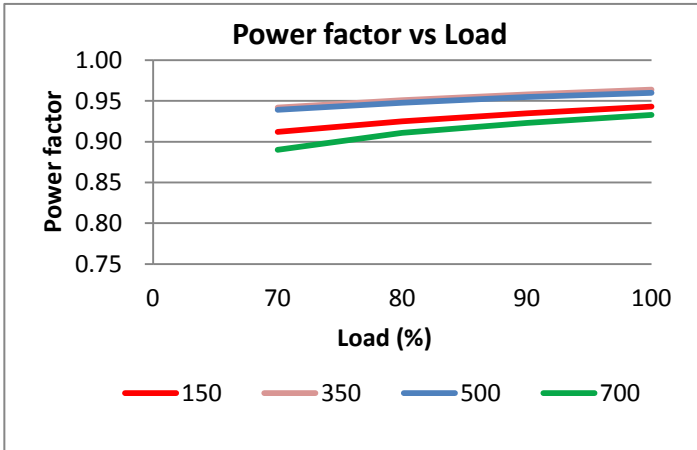
Cable information

PRI Connection	L	N
Color	Brown	Blue
Wire type	7022	7022
Wire diameter	AWG20	AWG20
Wire length	138mm	138mm
Stripping	6mm	6mm
Sec Connection	+	-
Color	Red	Black
Wire type	1332	1332
Wire diameter	AWG22	AWG22
Wire length	138mm	138mm
Stripping	6mm	6mm

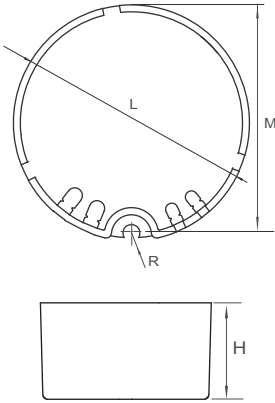
Subject to change without notice, HEP guarantees all products perform functionally well

Trailing Edge Dimmer list approved by HEP

Manufacturer	Model	Qty of parallelconnection
HEP	DCT101	22
HEP	DCT202	10
Philips	SED-200A	14
Merten/Schneider	SBD315RC	23
Etman	ETM327	23
Etman	ETM329	23

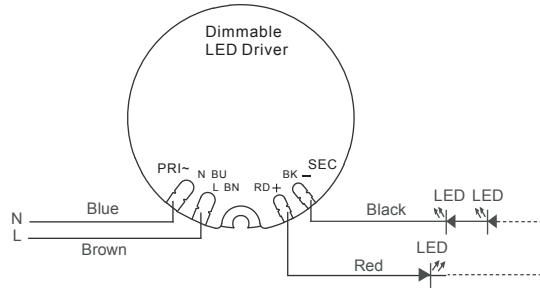


**Physical
Parameter**



L : 44.3 mm M : 42.8 mm
 H : 25 mm R : 1.6 mm
 Tolerance : +/-1 mm , R : +/-0.5 mm
 Housing Material : Polycarbonate / Potting
 Soldering : Lead-Free, Comply With RoHS
 Label : Surface Print

Wiring Diagram



TC location (Bottom)

