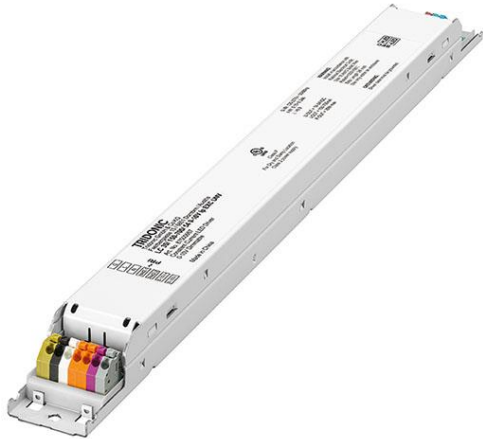


Driver LC 35W 150-700mA 54V 0-10V Ip EXC UNV

Linear excite series (US applications)

**Product description**

- _ Constant current LED Driver
- _ Only for US applications
- _ Dimmable via 0 ... 10 V
- _ Dimming range 1 to 100 %
- _ Class 2
- _ UL Listed Class P
- _ FCC Part 15
- _ Adjustable output current between 150 and 700 mA via ready2mains Programmer or I-SELECT 2 plugs
- _ Max. output power 35 W
- _ Up to 88.4 % efficiency
- _ Nominal life-time up to 100,000 h
- _ 5-year guarantee

Housing properties

- _ Low profile metal casing with white cover
- _ Type of protection IP20
- _ Dry and damp location

Functions

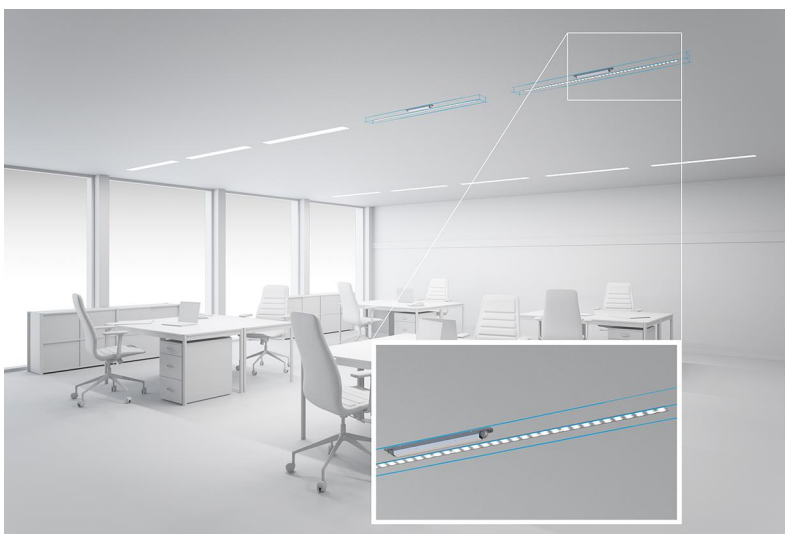
- _ Adjustable output current in 1-mA-steps (ready2mains, I-SELECT 2)
- _ 0 – 10 V dimming interface
- _ Protective features (overtemperature, short-circuit, overload, no-load, input voltage range)

Benefits

- _ Operating window for maximum compatibility
- _ Added energy savings with dimming via 0 ... 10 V interface
- _ Configuration via ready2mains and I-SELECT 2
- _ Tailor your dimming response with either Linear or Logarithmic Dimming Curves

Typical applications

- _ For linear/area lighting in office, education, healthcare, and general lighting applications

**Website**

<http://www.tridonic.com/87500687>



Spotlights



Downlights



Linear



Area



Floor | Wall



Free-standing



Street



Decorative

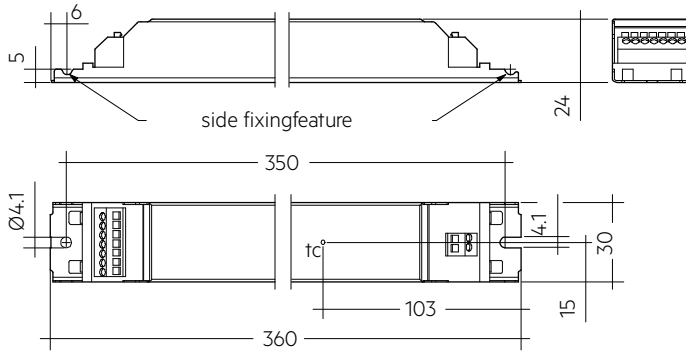


High bay

Driver LC 35W 150-700mA 54V 0-10V Ip EXC UNV

Linear excite series (US applications)

The complete data sheet for this product is available in the Downloads section.

**Ordering data**

Type	Article number	Packaging, carton	Packaging, low volume	Packaging, high volume	Weight per pc.
LC 35/ 150-700/ 54 0-10V Ip EXC UNV	87500687	20 pc(s).	260 pc(s).	1,560 pc(s).	0.323 kg

Technical data

Rated supply voltage	120 – 277 V
AC voltage range	108 – 305 V
Mains frequency	50 / 60 Hz
Typ. current (at 120 V, 60 Hz, full load) ^{①②}	34.3 mA
Typ. current (at 277 V, 60 Hz, full load) ^{①②}	156 mA
Leakage current (at 120 V, 60 Hz, full load) ^{①②}	< 700 µA
Leakage current (at 277 V, 60 Hz, full load) ^{①②}	< 700 µA
Max. input power (at 120 V, 60 Hz, full load)	41 W
Max. input power (at 277 V, 60 Hz, full load)	40 W
Typ. efficiency (at 120 V, 60 Hz, full load) ^②	86.9 %
Typ. efficiency (at 277 V, 60 Hz, full load) ^②	88.4 %
λ (at 120 V, 60 Hz, full load) ^①	0.99
λ (at 277 V, 60 Hz, full load) ^①	0.91C
Typ. input current in no-load operation (at 120 V, 60 Hz)	16 mA
Typ. input current in no-load operation (at 277 V, 60 Hz)	31 mA
Typ. input power in no-load operation (at 120 V, 60 Hz)	0.4 W
Typ. input power in no-load operation (at 277 V, 60 Hz)	0.5 W
In-rush current (peak / duration at 120 V)	15.8 A / 180 µs
In-rush current (peak / duration at 277 V)	36.6 A / 149 µs
THD (at 120 V, 60 Hz, full load) ^①	< 10 %
THD (at 277 V, 60 Hz, full load) ^①	< 15 %
Starting time (full load) ^①	≤ 700 ms
Turn off time at full load	≤ 30 ms
Hold time (power failure, full load)	< 20 ms
Output current tolerance ^{①③}	± 5 %
Max. output current peak (non-repetitive)	≤ output current + 35 %
Output LF current ripple (< 120 Hz)	± 5 %
Output P_ST_LM	≤ 1
Output SVM	≤ 0.4
Max. output voltage (U-OUT)	60 V
Dimming range	1 – 100 %
Mains surge capability (between L - N)	2.5 kV
Mains surge capability (between L/N - PE)	2.5 kV
Surge voltage at output side (against PE)	500 V
Type of protection	IP20
Life-time	up to 100,000 h
Dimensions L x W x H	360 x 30 x 24 mm

Approval marks**Standards**

UL 8750, CSA C22.2, FCC PART 15

Specific technical data

Type	Output current ^③	Min. forward voltage	Max. forward voltage	Max. output power (at 120 V, 60 Hz, full load)	Typ. power consumption (at 120 V, 60 Hz, full load)	Typ. current consumption (at 120 V, 60 Hz, full load)	Max. output power (at 277 V, 60 Hz, full load)	Typ. power consumption (at 277 V, 60 Hz, full load)	Typ. current consumption (at 277 V, 60 Hz, full load)	t _c point max. ^④	Ambient temperature t _a	I-SELECT 2 resistor value ^⑤
LC 35/ 150-700/ 54 0-10V Ip EXC UNV	150 mA	18 V	54.0 V	8.1 W	11.4 W	104 mA	8.1 W	11.7 W	77 mA	65 °C	-25 ... +55 °C	-
LC 35/ 150-700/ 54 0-10V Ip EXC UNV	200 mA	18 V	54.0 V	10.8 W	14.2 W	125 mA	10.8 W	14.4 W	75 mA	65 °C	-25 ... +55 °C	25.00 kΩ
LC 35/ 150-700/ 54 0-10V Ip EXC UNV	250 mA	18 V	54.0 V	13.5 W	17.0 W	148 mA	13.5 W	17.1 W	84 mA	65 °C	-25 ... +55 °C	20.00 kΩ
LC 35/ 150-700/ 54 0-10V Ip EXC UNV	300 mA	18 V	54.0 V	16.2 W	19.7 W	170 mA	16.2 W	19.9 W	95 mA	65 °C	-25 ... +55 °C	16.67 kΩ
LC 35/ 150-700/ 54 0-10V Ip EXC UNV	350 mA	18 V	54.0 V	18.9 W	22.6 W	194 mA	18.9 W	22.6 W	102 mA	65 °C	-25 ... +55 °C	14.29 kΩ
LC 35/ 150-700/ 54 0-10V Ip EXC UNV	400 mA	18 V	54.0 V	21.6 W	25.7 W	217 mA	21.6 W	25.5 W	111 mA	65 °C	-25 ... +55 °C	12.50 kΩ
LC 35/ 150-700/ 54 0-10V Ip EXC UNV	450 mA	18 V	54.0 V	24.3 W	28.5 W	242 mA	24.3 W	28.3 W	120 mA	65 °C	-25 ... +55 °C	11.11 kΩ
LC 35/ 150-700/ 54 0-10V Ip EXC UNV	500 mA	18 V	54.0 V	27.0 W	31.7 W	267 mA	27.0 W	31.2 W	124 mA	65 °C	-25 ... +55 °C	10.00 kΩ
LC 35/ 150-700/ 54 0-10V Ip EXC UNV	550 mA	18 V	54.0 V	29.7 W	34.4 W	290 mA	29.7 W	34.0 W	133 mA	65 °C	-25 ... +55 °C	9.09 kΩ
LC 35/ 150-700/ 54 0-10V Ip EXC UNV	600 mA	18 V	54.0 V	32.4 W	37.5 W	316 mA	32.4 W	36.7 W	143 mA	65 °C	-25 ... +55 °C	8.33 kΩ
LC 35/ 150-700/ 54 0-10V Ip EXC UNV	650 mA	18 V	53.8 V	35.0 W	40.4 W	339 mA	35.0 W	39.4 W	152 mA	65 °C	-25 ... +55 °C	7.69 kΩ
LC 35/ 150-700/ 54 0-10V Ip EXC UNV	700 mA	18 V	50.0 V	35.0 W	40.7 W	349 mA	35.0 W	39.7 W	153 mA	65 °C	-25 ... +55 °C	0.00 kΩ

① Valid at 100 % dimming level.

② Depending on the selected output current.

③ Output current is mean value.

④ The table only lists a number of possible operating points but does not cover each single point. The output current can be set within the total value range in 1-mA-steps.

⑤ 5-year guarantee.

⑥ Not compatible with I-SELECT (generation 1). Calculated resistor value.