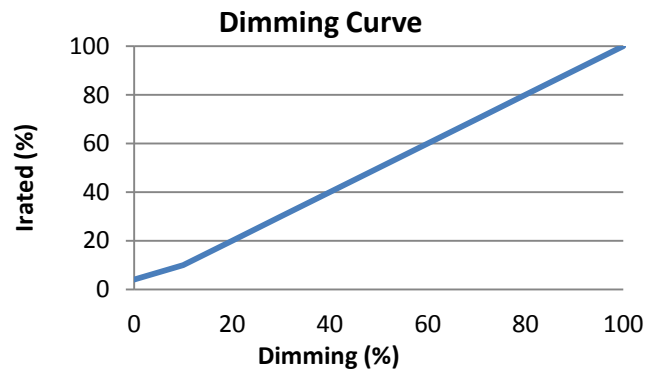
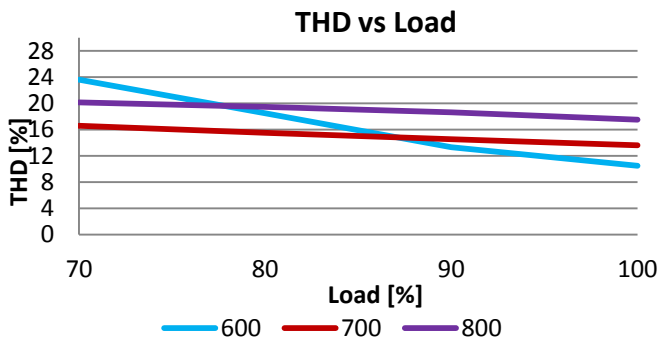
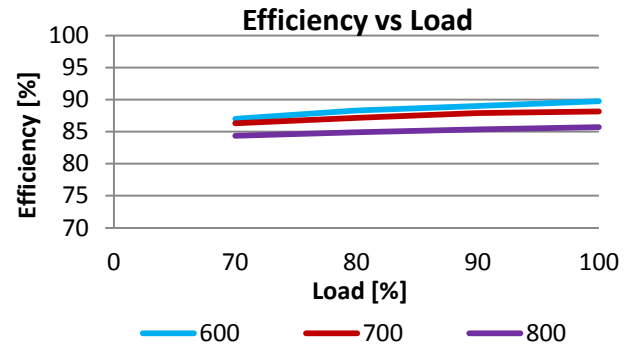
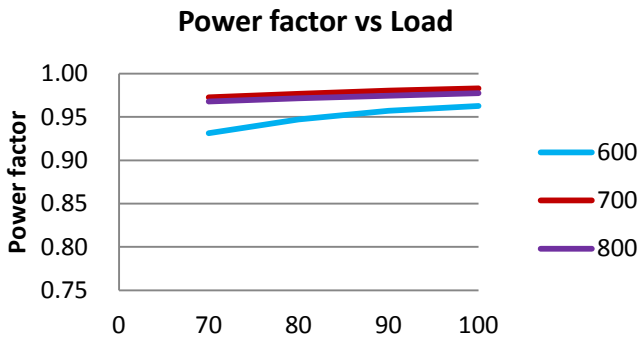


Item	Value	Remark	
Nominal voltage	220–240V		
Nominal frequency	0 / 50–60Hz		
AC voltage range	198–264V		
DC voltage range (start)	NA		
DC voltage range (operation)	NA		
Maximum voltage	280Vac	2 h maximum.unit might not operate in this abnormal condition	
Input	Nominal current		
	G5RT30W600LRP	150mA	
	G5RT30W700LRP	170mA	
	G5RT30W800LRP	190mA	
	Total Harmonic Distortion (THD)	< 20%	Full load @230VAC
	Power factor	0.9C	Full load @230VAC
	Efficiency		Full load @230VAC
	G5RT30W600/700LRP	86% (Typ.)	
	G5RT30W800LRP	85% (Typ.)	
	No-load power	NA	
Stand-by power	NA		
Protection class	NA		
Inrush current	6A/50us		
Earth leakage current	NA		
Output	Nominal voltage range		
	G5RT30W600/700LRP	25-42Vdc	
	G5RT30W800LRP	25-40Vdc	
	Maximum voltage	55Vdc	
	Nominal current range		
	G5RT30W600LRP	600mA	
	G5RT30W700LRP	700mA	
	G5RT30W800LRP	800mA	
	Current accuracy	± 5%	
	Current ripple	± 5%	

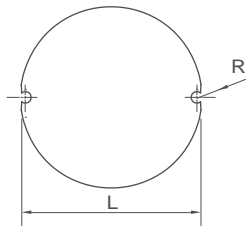
	Item	Value	Remark
Output	Nominal power range		
	G5RT30W600LRP	15-25.2W	
	G5RT30W700LRP	17.5-29.4W	
	G5RT30W800LRP	20-32W	
	Maximum power	32W	
Dimming	Dimming control	Trailing Edge	
	Dimming technique	Amplitude	
	PWM frequency	NA	
	Dimming range	10-100%	
	Lowest dimming current	10%	
	Galvanic isolation	NA	
Environment	Ambient temperature range t_a	-20°C...+50°C	
	Maximum case temperature t_c	85°C	
	Max. case temp. in fault condition	110°C	When operating under fault conditions, the temperature of the enclosure at any location should not exceed 110 °C
	Storage temperature range	-40°C...+85°C	
	Relative humidity	10%...95%	
	Surge transient protection	1 kV	L/N
	Environmental rating	Indoor	
	IP rating	IP20	
	Mains switching cycles	> 100,000	
	Expected lifetime	> 50,000 h, t_c 85 °C @ t_a 50 °C > 100000 h, t_c 75 °C @ t_a 40 °C	0.2 % / 1,000 h failure rate 0.1 % / 1,000 h failure rate
Packing	Gross weight/box	9.4 Kg	
	Net weight/box	8.4 Kg	
	Pcs/box	56 PCS	
	Dimension/box	490(L)*270(W)*225(H)mm	
Protections			
Short- & open circuit proof, Auto. overheat regulation or cut off, Overload protection			
Conformity & Standards			
Safety standard:	EN 61347-1, EN 61347-2-13, EN 62493		
Performance:	EN 62384		
EMC standard:	EN 55015, EN 61000-3-2, EN 61000-3-3, EN 61547		
Cable information			
PRI Connection	L	N	
Color	Brown	Blue	
Wire type	7022	7022	
Wire diameter	AWG20	AWG20	
Wire length	137mm	137mm	
Stripping	6mm	6mm	
SEC Connection	+	-	
Color	Red	Black	
Wire type	1332	1332	
Wire diameter	AWG22	AWG22	
Wire length	136mm	136mm	
Stripping	6mm	6mm	

Trailing Edge Dimmer list approved by HEP

Manufacturer	Model	Q'ty of parallelconnection
HEP	DCT101	6
HEP	DCT202	2
Philips	SED-200A	6
Merten/Schneider	SBD315RC	8
Etman	ETM327	8
Etman	ETM329	8



**Physical
Parameter**



L : 65 mm H : 30 mm R : 1.7 mm

Tolerance : +/-1 mm , R : +/-0.5 mm

Housing Material : Polycarbonate / Potting

Soldering : Lead-Free, Comply With RoHS

Label : Surface Print

Wiring Diagram

