

Driver LC 14W 250-350mA flexC R ADV2

advanced round series

**Product description**

- _ Fixed output built-in LED Driver
- _ Constant current LED Driver
- _ For luminaires of protection class I and protection class II
- _ Adjustable output current 250 or 350 mA
- _ Up to 90 % efficiency
- _ For ambient temperatures up to 60 °C
- _ Nominal lifetime up to 50,000 h (at ta 50 °C)
- _ 5 years guarantee

Housing properties

- _ Casing: polycarbonate, white
- _ Type of protection IP20

Functions

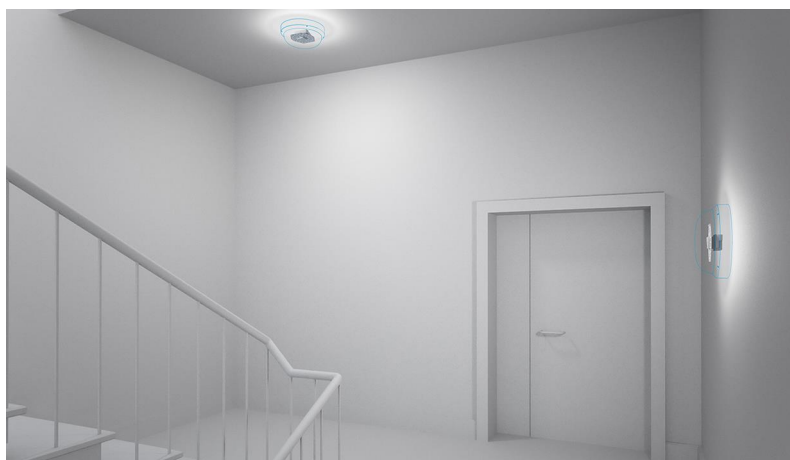
- _ Overload protection
- _ Short-circuit protection
- _ No-load protection

Typical applications

- _ For spot light, track light and wall light in retail and hospitality application

Website

<http://www.tridonic.com/28003210>



Spotlights



Downlights



Linear



Area



Floor | Wall



Free-standing



Street



Decorative

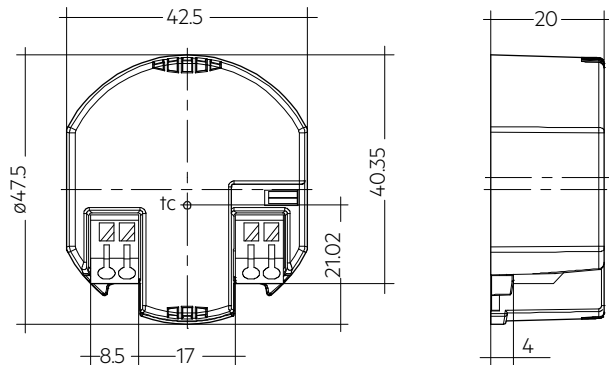


High bay

Driver LC 14W 250-350mA flexC R ADV2

advanced round series

The complete data sheet for this product is available in the Downloads section.

**Ordering data**

Type	Article number	Packaging, carton	Packaging, pallet	Weight per pc.
LC 14/250-350/40 flexC R ADV2	28003210	200 pc(s).	7,200 pc(s).	0.044 kg

Technical data

Rated supply voltage	220 – 240 V
AC voltage range	198 – 264 V
Mains frequency	50 / 60 Hz
Typ. efficiency (at 230 V, 50 Hz, full load) ^①	90 %
λ (at 230 V, 50 Hz, full load) ^①	0.95
Output current tolerance ^②	$\pm 7.5 \%$
Max. output peak current	361 mA
Max. output voltage (U-OUT)	50 V
THD (at 230 V, 50 Hz, full load) ^①	< 25 %
Typ. current ripple (at 230 V, 50 Hz, full load)	$\pm 5 \%$
Output P_ST_LM (at full load)	≤ 1
Output SVM (at full load)	≤ 0.4
Starting time (at 230 V, 50 Hz, full load)	≤ 0.5 s
Turn off time (at 230 V, 50 Hz, full load)	≤ 0.5 s
Hold on time at power failure (output)	0 s
Ambient temperature t_a (at lifetime 50,000 h)	50 °C
Storage temperature t_s	-20 ... +60 °C
Mains burst capability	1 kV
Mains surge capability (between L - N)	1 kV
Mains surge capability (between L/N - PE)	2 kV
Lifetime	up to 50,000 h
Guarantee	5 Year(s)
Dimensions L x W x H	47 x 42 x 20 mm

Approval marks**Standards**

EN 55015, EN 61000-3-2, EN 61000-3-3, EN 61347-1, EN 61347-2-13, EN 61547, EN 62384

Specific technical data

Type	Output current ^②	Min. forward voltage	Max. forward voltage	Max. output power	Typ. power consumption (at 230 V, 50 Hz, full load)	Typ. current consumption (at 230 V, 50 Hz, full load)	tc point max.	Ambient temperature ta	Iout select
LC 14/250-350/40 flexC R ADV2	250 mA	24 V	40 V	10 W	12 W	60 mA	85 °C	-20 ... +60 °C	open
LC 14/250-350/40 flexC R ADV2	350 mA	24 V	40 V	14 W	16 W	80 mA	85 °C	-20 ... +60 °C	short

① Test result at 350 mA.

② Output current is mean value.