



### Approval Marks



Item	Value	Remark
Nominal voltage	220–240V	
Nominal frequency	50–60Hz	
AC voltage range	198–264V	
DC voltage range (start)	NA	
DC voltage range (operation)	NA	
Maximum voltage	264Vac	
Nominal current		
G5S15W300LR-Z	75mA	
G5S15W350/500/700LR-Z	85mA	
G5S15W1050LR-Z	95mA	
Total Harmonic Distortion (THD)	< 15%	Full load @230VAC
Power factor	0.9C	Full load @230VAC
Displacement factor	0.9C	Full load @230VAC
Efficiency	84% (Typ.)	Full load @230VAC
No-load power	NA	
Stand-by power	NA	
Protection class	II	Suitable for class II luminaires
Inrush current	9A / 150uS	Nominal
Earth leakage current	NA	
Nominal voltage range		
G5S15W300LR-Z	26-42 Vdc	Full load @230VAC
G5S15W350LR-Z	26-42 Vdc	Full load @230VAC
G5S15W500LR-Z	18-30 Vdc	Full load @230VAC
G5S15W700LR-Z	13-21 Vdc	Full load @230VAC
G5S15W1050LR-Z	9-15 Vdc	Full load @230VAC
Maximum voltage		
G5S15W300/350LR-Z	53Vdc	
G5S15W500LR-Z	42Vdc	
G5S15W700LR-Z	32Vdc	
G5S15W1050LR-Z	26Vdc	

	Item	Value	Remark
Output	Nominal current range		
	G5S15W300LR-Z	300mA	Full load @230VAC
	G5S15W350LR-Z	350mA	Full load @230VAC
	G5S15W500LR-Z	500mA	Full load @230VAC
	G5S15W700LR-Z	700mA	Full load @230VAC
	G5S15W1050LR-Z	1050mA	Full load @230VAC
	Current accuracy	± 5%	Full load @230VAC
	Typical output LF current ripple	± 5%	Low Frequency< 120Hz Full load @230VAC
	Starting time	< 0.5 S	Full load @230VAC
	SVM	≤ 0.4	Full load @230VAC
P <sub>st</sub> LM	≤ 1	Full load @230VAC	
Dimming	Nominal power range		
	G5S15W300LR-Z	8-12.5W	
	G5S15W350LR-Z	9-14.5W	
	G5S15W500LR-Z	9-15W	
	G5S15W700LR-Z	9-14.5W	
	G5S15W1050LR-Z	9.5-15.5W	
Maximum power	15.5W		
Environment	Dimming control	NA	
	Dimming technique	NA	
	PWM frequency	NA	
	Dimming range	NA	
	Lowest dimming current	NA	
	Galvanic isolation	NA	
Packing	Ambient temperature range t <sub>a</sub>	-20°C - +50°C	
	Maximum case temperature t <sub>c</sub>	85°C	Bottom
	Max. case temp. in fault condition	110°C	When operating under fault conditions, the temperature of the enclosure at any location should not exceed 110 °C
	Storage temperature range	-25°C - +85°C	
	Relative humidity	10% - 95%	
	Surge transient protection	1 kV	L/N
	Environmental rating	Indoor	
	IP rating	IP20	
	Mains switching cycles	> 100,000	
	Expected lifetime	> 50,000 h, t <sub>c</sub> 85 °C @ t <sub>a</sub> 50 °C > 100000 h, t <sub>c</sub> 75 °C @ t <sub>a</sub> 40 °C	0.2 % / 1,000 h failure rate
Protections	Gross weight/box	7.6 kg	
	Net weight/box	6.6 kg	
	Pcs/box	100 PCS	
	Dimension/box	490(L)*270(W)*225(H)mm	
<b>Conformity &amp; Standards</b>			
Safety standard:	EN 61347-1, EN 61347-2-13, EN 62493		
Performance:	EN 62384		
CCC standard:	GB17625.1,GB/T17743,GB19510.1,GB19510.14		
EMC standard:	EN 55015, EN 61000-3-2, EN 61000-3-3, EN 61547		

---

**Cable information**

---

**PRI**Cable cross-section 0.75-1.5mm<sup>2</sup>/AWG 18-16Stripping 6mm

---

**SEC**Cable cross-section 0.5-1.5mm<sup>2</sup>/AWG 20-16Stripping 6mm

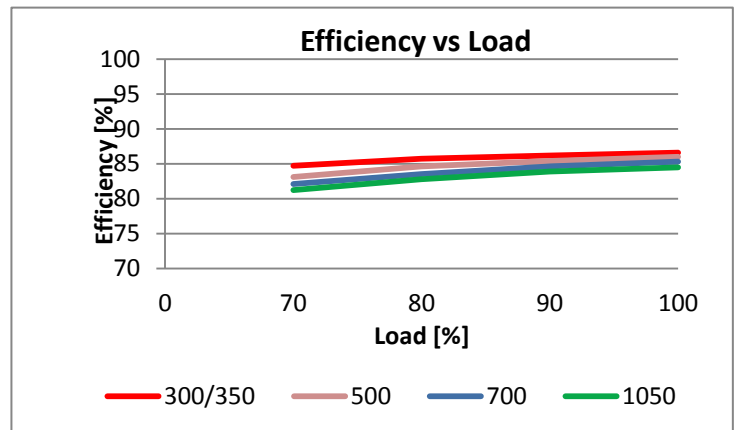
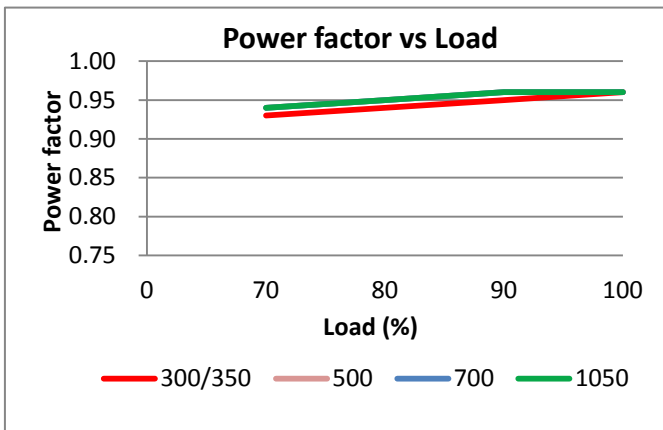
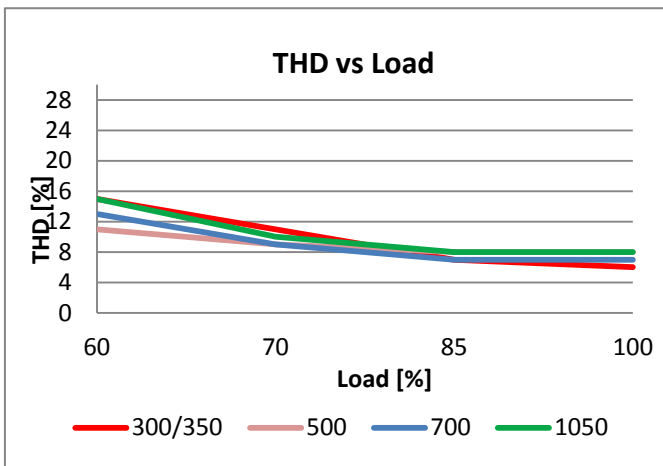
---

**Terminal information****PRI**-Screw type**SEC**-Screw type

---

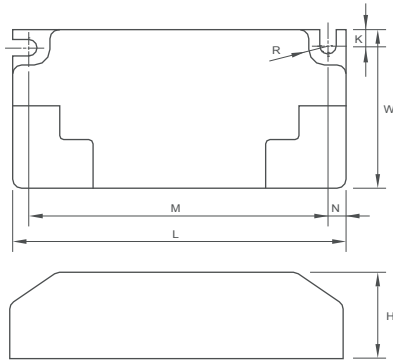
\* If not mentioned, all the test conditions are based on full load at 230VAC input (for 220-240 VAC input).

\*Subject to change without notice, HEP guarantees all products perform functionally well\*

**Electrical Values**

## Physical

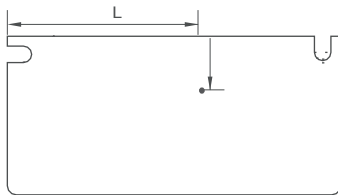
### Parameter



L : 85 mm	H : 22 mm
M : 76.4 mm	K : 4.0 mm
N : 4.6 mm	R : 2.1 mm
W : 40.4 mm	Slot On One Side Allowing Alignment : M $\pm$ 3 mm
Tolerance : $\geq 0 \sim 100 \geq \pm 0.5$ mm	
100 $\geq \pm 1$ mm	
Terminal Block	: PRI : Screw Type
	: SEC : Screw Type
Housing Material	: Polycarbonate
Soldering	: Lead-Free, Comply With RoHS
Label	: Surface Print

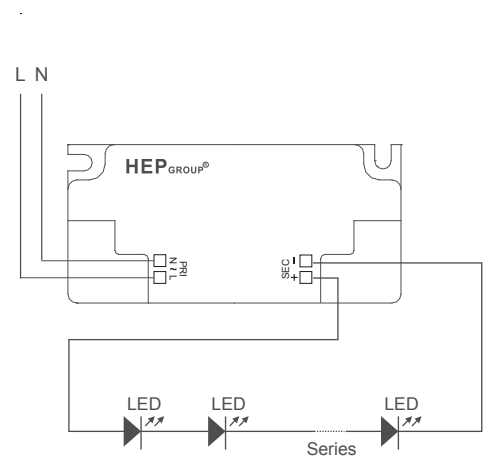
### Case temperature (tc-point)

#### On the bottom



L : 50 mm      W : 10 mm

## Wiring Diagram



The length of wire from output to luminaire should be less than 2M