

Driver LC 60W 1000-1400mA flexC SC ADV

ADVANCED series



With strain-relief (see accessory)

Product description

- _ Can be either used built-in or independent with clip-on strain-relief (see accessory)
- _ Constant current LED Driver
- _ Adjustable output current between 1,000 and 1,400 mA, in 5 steps with ADV plug technology (pre-selected current 1,000 mA)
- _ Max. output power 61.6 W
- _ For luminaires of protection class I and protection class II
- _ Temperature protection as per EN 61347-2-13 C5e
- _ Small design (130 x 43 x 30 mm)
- _ Nominal life-time up to 100,000 h
- _ 5-year guarantee

Properties

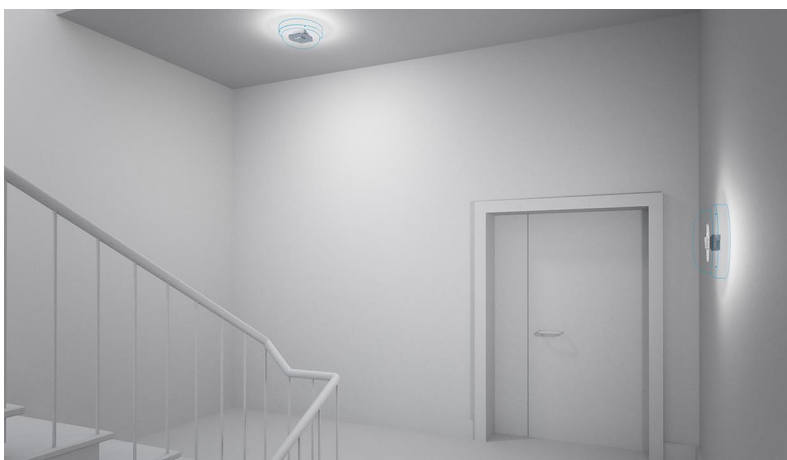
- _ Casing: polycarbonate, white
- _ Type of protection IP20

Functions

- _ Overtemperature protection
- _ Overload protection
- _ Short-circuit protection
- _ No-load protection
- _ Burst protection voltage 1 kV
- _ Surge protection voltage 1 kV (L to N)
- _ Surge protection voltage 2 kV (L/N to earth)

Typical applications

- _ For spot light and downlight in retail and hospitality applications
- _ For panel light and area light in office and education application

Website
<http://www.tridonic.com/87500681>


Spotlights



Downlights



Linear



Area



Floor | Wall



Free-standing



Street



Decorative

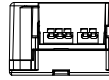
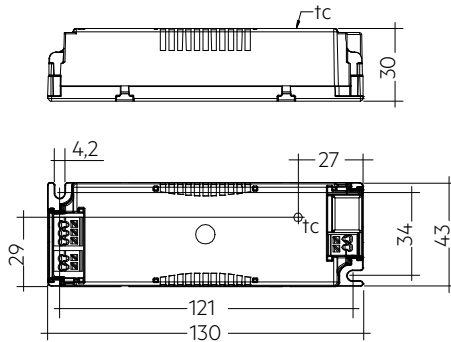


High bay

Driver LC 60W 1000-1400mA flexC SC ADV

ADVANCED series

The complete data sheet for this product is available in the Downloads section.

**Ordering data**

Type	Article number	Packaging, carton	Packaging, low volume	Packaging, high volume	Weight per pc.
LC 60W 1000-1400mA flexC SC ADV	87500681	15 pc(s).	390 pc(s).	3,120 pc(s).	0.158 kg

Technical data

Rated supply voltage	220 – 240 V
AC voltage range	198 – 264 V
Max. input current (at 230 V, 50 Hz, full load)	0.3 A
Leakage current (at 230 V, 50 Hz, full load)	< 450 µA
Mains frequency	50 / 60 Hz
Overvoltage protection	320 V AC, 1 h
Max. input power	70 W
Typ. power consumption (at 230 V, 50 Hz, full load) ①	68 W
Min. output power	32 W
Max. output power	61.6 W
Typ. efficiency (at 230 V, 50 Hz, full load) ①	90 %
λ (at 230 V, 50 Hz, full load) ①	0.95C
Output current tolerance ②	± 7.5 %
Max. output current peak ③	≤ output current + 12.5 %
Max. output voltage (U-OUT)	60 V
THD (at 230 V, 50 Hz, full load) ①	< 10 %
Output LF current ripple (< 120 Hz)	± 5 %
Time to light (at 230 V, 50 Hz, full load)	≤ 0.5 s
Turn off time (at 230 V, 50 Hz, full load)	≤ 0.5 s
Hold on time at power failure (output)	0 s
Ambient temperature ta (at life-time 50,000 h)	50 °C
Storage temperature ts	-40 ... +80 °C
Dimensions L x W x H	130 x 43 x 30 mm

Approval marks**Standards**

EN 55015, EN 61000-3-2, EN 61000-3-3, EN 61347-1, EN 61347-2-13, EN 61547, EN 62384

Specific technical data

Type	Output current ^②	Min. forward voltage	Max. forward voltage	Max. output power	Typ. power consumption (at 230 V, 50 Hz, full load)	Typ. current consumption (at 230 V, 50 Hz, full load)	tc point max.	Ambient temperature ta	Iout select	Resistor ^④
LC 60W 1000-1400mA flexC SC ADV	1,000 mA	32 V	40 V	40.0 W	45 W	200 mA	85 °C	-20 ... +50 °C	-	-
LC 60W 1000-1400mA flexC SC ADV	1,050 mA	30 V	40 V	42.0 W	47 W	210 mA	85 °C	-20 ... +50 °C	0-1	ADV Type E
LC 60W 1000-1400mA flexC SC ADV	1,100 mA	28 V	42 V	46.2 W	51 W	230 mA	85 °C	-20 ... +50 °C	0-1	ADV Type A
LC 60W 1000-1400mA flexC SC ADV	1,200 mA	27 V	44 V	52.8 W	59 W	260 mA	85 °C	-20 ... +50 °C	0-2	ADV Type F
LC 60W 1000-1400mA flexC SC ADV	1,400 mA	27 V	44 V	61.6 W	68 W	300 mA	85 °C	-20 ... +50 °C	0-2	ADV Type A

① Test result at 1,400 mA.

② Output current is mean value.

③ Test result at 25 °C.

④ Type A is a short circuit plug (0 Ω).