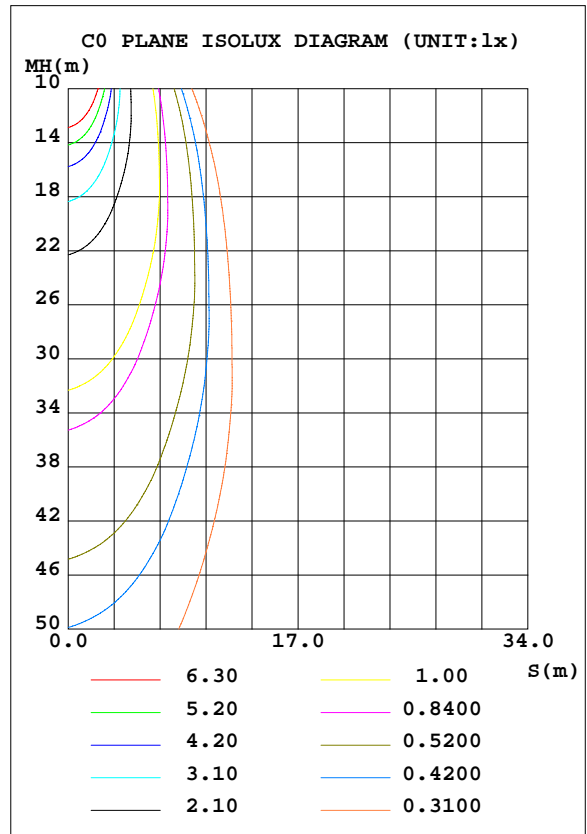
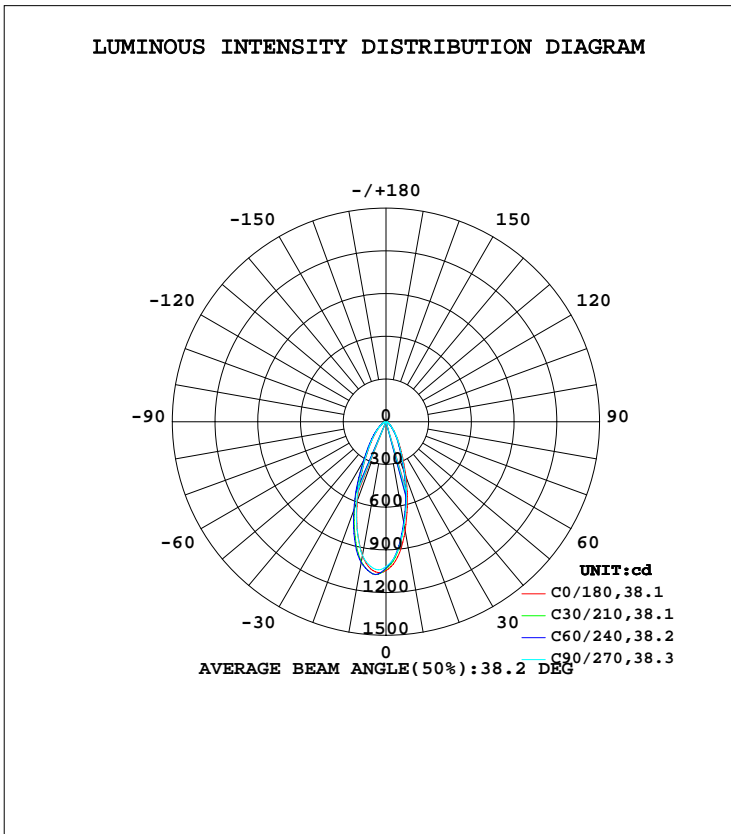


EVERFINE GONIOPHOTOMETERS SYSTEM TEST REPORT

LUMINAIRE PHOTOMETRIC TEST REPORT

Test:U:230.09V I:0.0579A P:7.1816W PF:0.5388 Freq:50.00Hz Lamp Flux:659.504x1 lm		
NAME: MR16 100-240V 7W	TYPE:检测中心-试产	WEIGHT:
SPEC.:MR16 100-240V 7W	DIM.:	SERIAL No.:S18110601-1
MFR.: FSL	SUR.:	Shielding Angle:

DATA OF LAMP		PHOTOMETRIC DATA Eff: 91.83 lm/W			
MODEL		I _{max} (cd)	1080	S/MH(C0/180)	0.70
NOMINAL POWER(W)	7	LOR(%)	100.0	S/MH(C90/270)	0.72
RATED VOLTAGE(V)	230	TOTAL FLUX(lm)	659.50	η UP, DN(C0-180)	0.0,43.5
NOMINAL FLUX(lm)	659.504	CIE CLASS	DIRECT	η UP, DN(C180-360)	0.0,56.5
LAMPS INSIDE	1	η up(%)	0.0	CIBSE SHR NOM	0.50
TEST VOLTAGE(V)	230	η down(%)	100.0	CIBSE SHR MAX	0.65



C Range: 0 - 360DEG
 C Interval: 15.0DEG
 Test Speed: HIGH
 Temperature:25.3DEG
 Operators:庞伟兰
 Test Date:2018-11-10

γ Range: 0 - 180DEG
 γ Interval: 1.0DEG
 Test System:EVERFINE GO-R5000_V2 SYSTEM V2.0.407.13
 Humidity:57.8%
 Test Distance:1.567m [K=1.0000]
 Remarks: